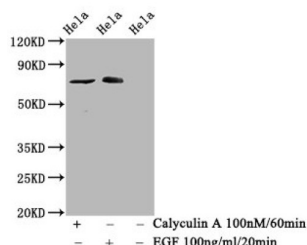


## RAF1 (pS621) Antibody

Catalogue No.: abx243016



### Western Blot

Positive WB detected in: HeLa whole cell lysate (treated with Calyculin A or EGF)

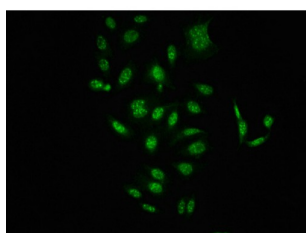
All lanes: Phospho-RAF1 antibody at 1.525 µg/ml

### Secondary

Goat polyclonal to rabbit IgG at 1/50000 dilution

Predicted band size: 73 KDa

Observed band size: 73 KDa



Immunofluorescence staining of HepG2 cells (treated with 50mM Calyculin A for 30min) with RAF1 (pS621) Antibody at 1/100, counter-stained with DAPI. The cells were fixed in 4% formaldehyde, permeabilized using 0.2% Triton X-100 and blocked in 10% normal Goat Serum. The cells were then incubated with the antibody overnight at 4°C. The secondary antibody was AF488-conjugated AffiniPure Goat Anti-Rabbit IgG (H+L).

RAF1 (pS621) Antibody is a Monoclonal Antibody against RAF1.

**Target:** RAF1

**Clonality:** Monoclonal

**Reactivity:** Human

**Expression:** Recombinant

**Tested Applications:** ELISA, WB, IF/ICC

**Host:** Rabbit

**Recommended dilutions:** WB: 1/500 - 1/5000, IF/ICC: 1/20 - 1/200. Optimal dilutions/concentrations should be determined by the end user.

**Conjugation:** Unconjugated

**Immunogen:** A synthesized peptide derived from human Phospho-RAF1 (S621).

**Isotype:** IgG

**Form:** Liquid

# Datasheet

Version: 2.0.0

Revision date: 29 Sep 2025



<b>Purification:</b>	Purified by affinity chromatography.
<b>Storage:</b>	Aliquot and store at -20 °C. Avoid repeated freeze/thaw cycles.
<b>UniProt Primary AC:</b>	P04049 ( <a href="#">UniProt</a> , <a href="#">ExPASy</a> )
<b>KEGG:</b>	hsa:5894
<b>String:</b>	<a href="#">9606.ENSP00000251849</a>
<b>Buffer:</b>	PBS, pH 7.4, 150 mM NaCl, 0.02% sodium azide and 50% glycerol.
<b>Note:</b>	THIS PRODUCT IS FOR RESEARCH USE ONLY. NOT FOR USE IN DIAGNOSTIC, THERAPEUTIC OR COSMETIC PROCEDURES. NOT FOR HUMAN OR ANIMAL CONSUMPTION.

For Reference Only