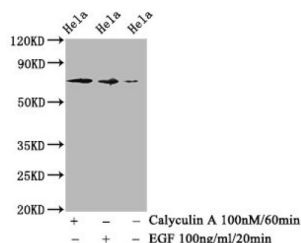


RAF1 (pS259) Antibody

Catalogue No.: abx243017



Western Blot

Positive WB detected in: HeLa whole cell lysate (treated with Calyculin A or EGF)

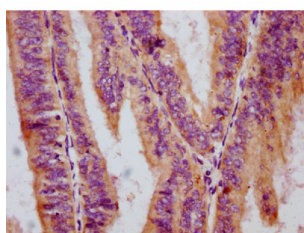
All lanes: Phospho-RAF1 antibody at 1.18 µg/ml

Secondary

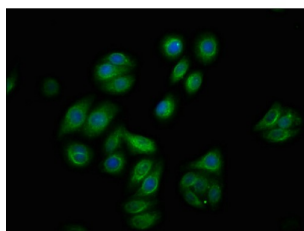
Goat polyclonal to rabbit IgG at 1/50000 dilution

Predicted band size: 73 KDa

Observed band size: 73 KDa



Immunohistochemistry analysis of RAF1 (pS259) Antibody diluted at 1/100 and staining in paraffin-embedded human endometrial cancer. After dewaxing and hydration, antigen retrieval was mediated by high pressure in a citrate buffer (pH 6.0). Section was blocked with 10% normal goat serum 30min at RT. Then primary antibody (1% BSA) was incubated at 4°C overnight. The primary is detected by a biotinylated secondary antibody and visualized using an HRP conjugated SP system.



Immunofluorescence staining of HepG2 cells with RAF1 (pS259) Antibody at 1/100, counter-stained with DAPI. The cells were fixed in 4% formaldehyde, permeabilized using 0.2% Triton X-100 and blocked in 10% normal Goat Serum. The cells were then incubated with the antibody overnight at 4°C. The secondary antibody was AF488-conjugated AffiniPure Goat Anti-Rabbit IgG (H+L).

RAF1 (pS259) Antibody is a Monoclonal Antibody against RAF1.

Target: RAF1

Clonality: Monoclonal

Reactivity: Human

Tested Applications: ELISA, WB, IHC, IF/ICC

Host: Rabbit

Recommended dilutions: WB: 1/500 - 1/5000, IHC: 1/50 - 1/200, IF/ICC: 1/20 - 1/200. Optimal dilutions/concentrations should be determined by the end user.

Conjugation: Unconjugated

Datasheet

Version: 3.0.0
Revision date: 25 Aug 2025



Immunogen:	A synthesized peptide derived from human Phospho-RAF1 (S259).
Isotype:	IgG
Form:	Liquid
Purification:	Purified by affinity chromatography.
Storage:	Aliquot and store at -20 °C. Avoid repeated freeze/thaw cycles.
UniProt Primary AC:	P04049 (UniProt , ExPASy)
KEGG:	hsa:5894
String:	9606.ENSP00000251849
Buffer:	PBS, pH 7.4, 150 mM NaCl, 0.02% sodium azide and 50% glycerol.
Note:	THIS PRODUCT IS FOR RESEARCH USE ONLY. NOT FOR USE IN DIAGNOSTIC, THERAPEUTIC OR COSMETIC PROCEDURES. NOT FOR HUMAN OR ANIMAL CONSUMPTION.