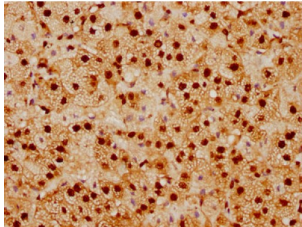
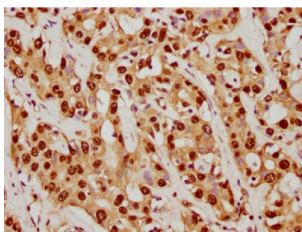


Small Ubiquitin Related Modifier Protein 1 (SUMO1) Antibody

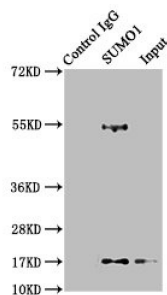
Catalogue No.: abx243069



Immunohistochemistry analysis of SUMO1 Antibody diluted at 1/92.5 and staining in paraffin-embedded human adrenal gland tissue. After dewaxing and hydration, antigen retrieval was mediated by high pressure in a citrate buffer (pH 6.0). Section was blocked with 10% normal goat serum 30min at RT. Then primary antibody (1% BSA) was incubated at 4°C overnight. The primary is detected by a biotinylated secondary antibody and visualized using an HRP conjugated SP system.



Immunohistochemistry analysis of SUMO1 Antibody diluted at 1/92.5 and staining in paraffin-embedded human liver cancer. After dewaxing and hydration, antigen retrieval was mediated by high pressure in a citrate buffer (pH 6.0). Section was blocked with 10% normal goat serum 30min at RT. Then primary antibody (1% BSA) was incubated at 4°C overnight. The primary is detected by a biotinylated secondary antibody and visualized using an HRP conjugated SP system.

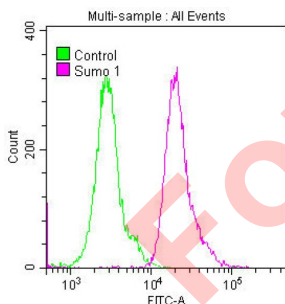


Immunoprecipitating SUMO1 in 293T whole cell lysate

Lane 1: Rabbit control IgG instead of SUMO1 Antibody in 293T whole cell lysate. For western blotting, a HRP-conjugated Protein G antibody was used as the secondary antibody (1/2000)

Lane 2: Small Ubiquitin Related Modifier Protein 1 (SUMO1) Antibody (3 µg) + 293T whole cell lysate (500 µg)

Lane 3: 293T whole cell lysate (20 µg)



Overlay histogram showing HeLa cells stained with SUMO1 Antibody (red line) at 1/50. The cells were fixed with 70% Ethylalcohol (18h) and then permeabilized with 0.3% Triton X-100 for 2 min. The cells were then incubated in 1x PBS /10% normal goat serum to block non-specific protein-protein interactions followed by primary antibody for 1 h at 4°C. The secondary antibody used was FITC goat anti-rabbit IgG (H+L) at 1/200 dilution for 1 h at 4°C. Control antibody (green line) was used under the same conditions. Acquisition of >10,000 events was performed.

SUMO1 Antibody is a Monoclonal Antibody against SUMO1.

Target: Small Ubiquitin Related Modifier Protein 1 (SUMO1)

Clonality: Monoclonal

Reactivity: Human

Datasheet

Version: 3.0.0
Revision date: 02 Oct 2025



Expression:	Recombinant
Tested Applications:	ELISA, IHC, FCM, IP
Host:	Rabbit
Recommended dilutions:	IHC: 1/50 - 1/200, IP: 1/200 - 1/1000. Optimal dilutions/concentrations should be determined by the end user.
Conjugation:	Unconjugated
Immunogen:	A synthesized peptide derived from human SUMO1.
Isotype:	IgG
Form:	Liquid
Purification:	Purified by affinity chromatography.
Storage:	Aliquot and store at -20 °C. Avoid repeated freeze/thaw cycles.
UniProt Primary AC:	P63165 (UniProt , ExPASy)
KEGG:	hsa:7341
String:	9606.ENSP00000376077
Buffer:	PBS, pH 7.4, 150 mM NaCl, 0.02% sodium azide and 50% glycerol.
Note:	THIS PRODUCT IS FOR RESEARCH USE ONLY. NOT FOR USE IN DIAGNOSTIC, THERAPEUTIC OR COSMETIC PROCEDURES. NOT FOR HUMAN OR ANIMAL CONSUMPTION.