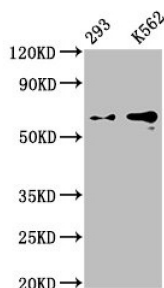


GPC3 Antibody

Catalogue No.: abx243074



Western Blot

Positive WB detected in: 293 whole cell lysate, K562 whole cell lysate

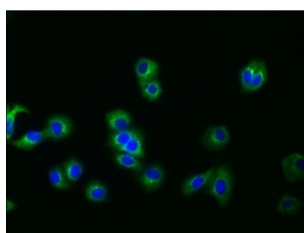
All lanes: GPC3 antibody at 0.9 µg/ml

Secondary

Goat polyclonal to rabbit IgG at 1/50000 dilution

Predicted band size: 66, 60, 69 KDa

Observed band size: 66 KDa



Immunofluorescence staining of HepG2 cells using GPC3 Antibody at 1/30, counter-stained with DAPI. The cells were fixed in 4% formaldehyde, permeabilized using 0.2% Triton X-100 and blocked in 10% normal Goat Serum. The cells were then incubated with the antibody overnight at 4°C. The secondary antibody was AF488-conjugated AffiniPure Goat Anti-Rabbit IgG (H+L).

GPC3 Antibody is a Monoclonal Antibody against GPC3.

Target: GPC3

Clonality: Monoclonal

Reactivity: Human

Expression: Recombinant

Tested Applications: ELISA, WB, IF/ICC

Host: Rabbit

Recommended dilutions: WB: 1/500 - 1/5000, IF/ICC: 1/20 - 1/200. Optimal dilutions/concentrations should be determined by the end user.

Conjugation: Unconjugated

Immunogen: A synthesized peptide derived from human GPC3.

Isotype: IgG

Form: Liquid

Datasheet

Version: 1.0.0

Revision date: 06 Sep 2025



Purification:	Purified by affinity chromatography.
Storage:	Aliquot and store at -20 °C. Avoid repeated freeze/thaw cycles.
UniProt Primary AC:	P51654 (UniProt , ExPASy)
Buffer:	PBS, pH 7.4, 150 mM NaCl, 0.02% sodium azide and 50% glycerol.
Note:	THIS PRODUCT IS FOR RESEARCH USE ONLY. NOT FOR USE IN DIAGNOSTIC, THERAPEUTIC OR COSMETIC PROCEDURES. NOT FOR HUMAN OR ANIMAL CONSUMPTION.

For Reference Only