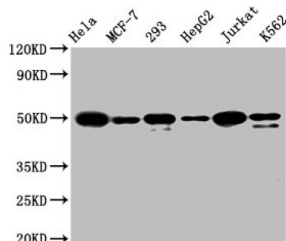


ATF4 Antibody

Catalogue No.: abx243091



Western Blot

Positive WB detected in: HeLa whole cell lysate, MCF-7 whole cell lysate, 293 whole cell lysate, HepG2 whole cell lysate, Jurkat whole cell lysate, K562 whole cell lysate

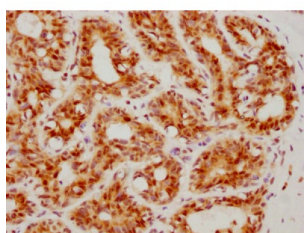
All lanes: ATF4 antibody at 1.6 µg/ml

Secondary

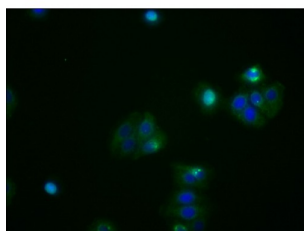
Goat polyclonal to rabbit IgG at 1/50000 dilution

Predicted band size: 39 KDa

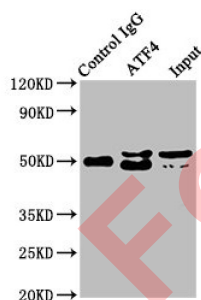
Observed band size: 50 KDa



Immunohistochemistry analysis of ATF4 Antibody diluted at 1/160 and staining in paraffin-embedded human breast cancer. After dewaxing and hydration, antigen retrieval was mediated by high pressure in a citrate buffer (pH 6.0). Section was blocked with 10% normal goat serum 30min at RT. Then primary antibody (1% BSA) was incubated at 4°C overnight. The primary is detected by a biotinylated secondary antibody and visualized using an HRP conjugated SP system.



Immunofluorescence staining of HepG2 cells with ATF4 Antibody at 1/53, counter-stained with DAPI. The cells were fixed in 4% formaldehyde, permeabilized using 0.2% Triton X-100 and blocked in 10% normal Goat Serum. The cells were then incubated with the antibody overnight at 4°C. The secondary antibody was AF488-conjugated AffiniPure Goat Anti-Rabbit IgG (H+L).

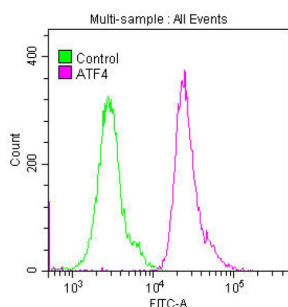


Immunoprecipitating ATF4 in HeLa whole cell lysate

Lane 1: Rabbit control IgG instead of ATF4 Antibody in HeLa whole cell lysate. For western blotting, a HRP-conjugated Protein G antibody was used as the secondary antibody (1/2000)

Lane 2: ATF4 Antibody (3 µg) + HeLa whole cell lysate (500 µg)

Lane 3: HeLa whole cell lysate (20 µg)



Overlay histogram showing HeLa cells stained with ATF4 Antibody (red line) at 1/50. The cells were fixed with 70% Ethylalcohol (18h) and then permeabilized with 0.3% Triton X-100 for 2 min. The cells were then incubated in 1x PBS /10% normal goat serum to block non-specific protein-protein interactions followed by primary antibody for 1 h at 4°C. The secondary antibody used was FITC goat anti-rabbit IgG (H+L) at 1/200 dilution for 1 h at 4°C. Control antibody (green line) was used under the same conditions. Acquisition of >10,000 events was performed.

Datasheet

Version: 3.0.0
Revision date: 20 Aug 2025



ATF4 Antibody is a Monoclonal Antibody against ATF4.

Target:	ATF4
Clonality:	Monoclonal
Reactivity:	Human
Expression:	Recombinant
Tested Applications:	ELISA, WB, IHC, IF/ICC, FCM, IP
Host:	Rabbit
Recommended dilutions:	WB: 1/500 - 1/5000, IHC: 1/50 - 1/200, IF/ICC: 1/20 - 1/200, IP: 1/200 - 1/1000. Optimal dilutions/concentrations should be determined by the end user.
Conjugation:	Unconjugated
Immunogen:	A synthesized peptide derived from human ATF4.
Isotype:	IgG
Form:	Liquid
Purification:	Purified by affinity chromatography.
Storage:	Aliquot and store at -20 °C. Avoid repeated freeze/thaw cycles.
UniProt Primary AC:	P18848 (UniProt , ExPASy)
KEGG:	hsa:468
String:	9606.ENSP00000336790
Buffer:	PBS, pH 7.4, 150 mM NaCl, 0.02% sodium azide and 50% glycerol.
Note:	THIS PRODUCT IS FOR RESEARCH USE ONLY. NOT FOR USE IN DIAGNOSTIC, THERAPEUTIC OR COSMETIC PROCEDURES. NOT FOR HUMAN OR ANIMAL CONSUMPTION.