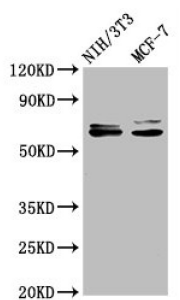


SRC Antibody

Catalogue No.: abx243097



Western Blot

Positive WB detected in: NIH/3T3 whole cell lysate, MCF-7 whole cell lysate

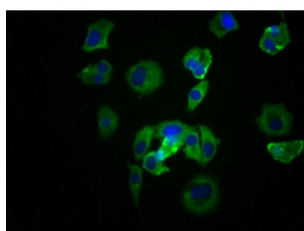
All lanes: SRC antibody at 1.2 µg/ml

Secondary

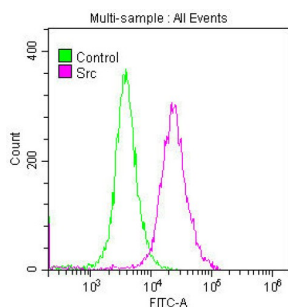
Goat polyclonal to rabbit IgG at 1/50000 dilution

Predicted band size: 60, 61 kDa

Observed band size: 60, 61 kDa



Immunofluorescence staining of MCF-7 cells using SRC Antibody at 1/39, counter-stained with DAPI. The cells were fixed in 4% formaldehyde, permeabilized using 0.2% Triton X-100 and blocked in 10% normal Goat Serum. The cells were then incubated with the antibody overnight at 4°C. The secondary antibody was AF488-conjugated AffiniPure Goat Anti-Rabbit IgG (H+L).



Overlay histogram showing SH-SY5Y cells stained with SRC Antibody (red line) at 1/50. The cells were fixed with 70% Ethylalcohol (18h) and then permeabilized with 0.3% Triton X-100 for 2 min. The cells were then incubated in 1x PBS /10% normal goat serum to block non-specific protein-protein interactions followed by primary antibody for 1 h at 4°C. The secondary antibody used was FITC goat anti-rabbit IgG (H+L) at 1/200 dilution for 1 h at 4°C. Control antibody (green line) was used under the same conditions. Acquisition of >10,000 events was performed.

SRC Antibody is a Monoclonal Antibody against SRC.

Target:

SRC

Clonality:

Monoclonal

Reactivity:

Human, Mouse

Tested Applications:

ELISA, WB, IF/ICC, FCM

Host:

Rabbit

Recommended dilutions: WB: 1/500 - 1/5000, IF/ICC: 1/20 - 1/200. Optimal dilutions/concentrations should be determined by the end user.

Conjugation:

Unconjugated

Datasheet

Version: 3.0.0

Revision date: 15 Sep 2025



Immunogen:	A synthesized peptide derived from human SRC.
Isotype:	IgG
Form:	Liquid
Purification:	Purified by affinity chromatography.
Storage:	Aliquot and store at -20 °C. Avoid repeated freeze/thaw cycles.
UniProt Primary AC:	P12931 (UniProt , ExPASy)
Buffer:	PBS, pH 7.4, 150 mM NaCl, 0.02% sodium azide and 50% glycerol.
Note:	THIS PRODUCT IS FOR RESEARCH USE ONLY. NOT FOR USE IN DIAGNOSTIC, THERAPEUTIC OR COSMETIC PROCEDURES. NOT FOR HUMAN OR ANIMAL CONSUMPTION.

For Reference Only