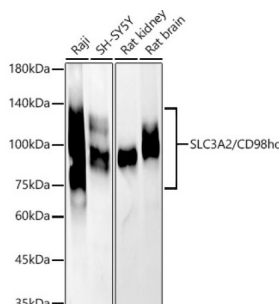
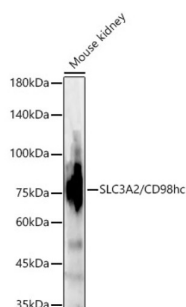


Amino Acid Transporter Heavy Chain SLC3A2 (SLC3A2) Antibody

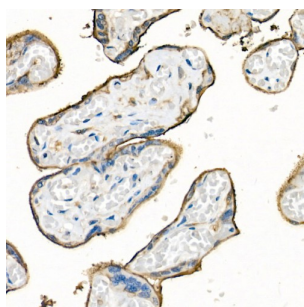
Catalogue No.: abx004361



Western blot analysis of various lysates, using SLC3A2/SLC3A2hc Antibody at 1/1000 dilution. Secondary antibody: HRP-conjugated Goat anti-Rabbit IgG (H+L) at 1/10000 dilution. Lysates/proteins: 25 µg per lane. Blocking buffer: 3% nonfat dry milk in TBST. Exposure time: 60s.



Western blot analysis of lysates from Mouse kidney, using SLC3A2/SLC3A2hc Antibody at 1/1000 dilution. Secondary antibody: HRP-conjugated Goat anti-Rabbit IgG (H+L) at 1/10000 dilution. Lysates/proteins: 25 µg per lane. Blocking buffer: 3% nonfat dry milk in TBST. Exposure time: 60s.



Western blot analysis of lysates from wild type (WT) and SLC3A2/SLC3A2hc knockdown (KD) HeLa cells using SLC3A2/SLC3A2hc Antibody at 1/1000 dilution incubated overnight at 4 °C. Secondary antibody: HRP-conjugated Goat anti-Rabbit IgG (H+L) at 1/10000 dilution. Lysates/proteins: 25 µg per lane. Blocking buffer: 3% nonfat dry milk in TBST. Exposure time: 30s.

SLC3A2 Antibody is a Rabbit Polyclonal antibody against SLC3A2. This gene is a member of the solute carrier family and encodes a cell surface, transmembrane protein. The protein exists as the heavy chain of a heterodimer, covalently bound through di-sulfide bonds to one of several possible light chains. The encoded transporter plays a role in regulation of intracellular calcium levels and transports L-type amino acids. Alternatively spliced transcript variants, encoding different isoforms, have been characterized.

Target: Amino Acid Transporter Heavy Chain SLC3A2 (SLC3A2)

Clonality: Polyclonal

Reactivity: Human, Mouse, Rat

Tested Applications: ELISA, WB, IHC

Host: Rabbit

Datasheet

Version: 6.0.0
Revision date: 09 Sep 2025



Recommended dilutions: ELISA: 1 µg/ml, WB: 1/500 - 1/1000, IHC-P: 1/50 - 1/200. Not tested in IHC-F. Optimal dilutions/concentrations should be determined by the end user.

Conjugation: Unconjugated

Immunogen: Recombinant protein corresponding to SLC3A2. The exact sequence is proprietary.

Isotype: IgG

Form: Liquid

Purification: Purified by affinity chromatography.

Storage: Aliquot and store at -20°C. Avoid repeated freeze/thaw cycles.

UniProt Primary AC: P08195 ([UniProt](#), [ExPASy](#))

Gene Symbol: SLC3A2

GeneID: [6520](#)

OMIM: [158070](#)

NCBI Accession: NP_001012680.1

HGNC: 11026

KEGG: hsa:6520

Ensembl: ENSG00000168003

Molecular Weight: Calculated MW: 58 kDa
Observed MW: 75-120 kDa

Buffer: PBS, pH 7.3, containing 0.09% sodium azide, 50% glycerol.

Concentration: > 0.2 mg/ml

Note: THIS PRODUCT IS FOR RESEARCH USE ONLY. NOT FOR USE IN DIAGNOSTIC, THERAPEUTIC OR COSMETIC PROCEDURES. NOT FOR HUMAN OR ANIMAL CONSUMPTION.