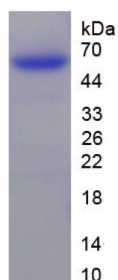
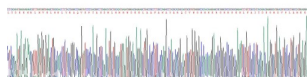


Human Peptidase Inhibitor 16 (PI16) Protein

Catalogue No.: abx068448



SDS-PAGE analysis of recombinant Human Peptidase Inhibitor 16 (PI16) Protein.



Gene sequencing extract of recombinant Human Peptidase Inhibitor 16 PI16 Protein.

Human Peptidase Inhibitor 16 (PI16) is a recombinant Human protein produced in a Prokaryotic expression system (E. coli).

This protein is the immunogen for the following antibodies: [abx102279](#), [abx173977](#)

Target: Peptidase Inhibitor 16 (PI16)

Origin: Human

Expression: Recombinant

Tested Applications: WB, SDS-PAGE

Host: E. coli

Conjugation: Unconjugated

Form: Lyophilized

Activity: Not tested

Purity: > 95%

Datasheet

Version: 2.0.0
Revision date: 04 Oct 2025



Reconstitution:	To keep the original salt concentration, we recommend reconstituting to the original concentration prior to lyophilization (see Concentration) in ddH ₂ O. If a lower concentration is required, dilute in PBS, pH 7.4. If a higher concentration is required, the product can be reconstituted directly in PBS, pH 7.4, though please note that this will change the overall salt concentration. The stock concentration should be between 0.1-1.0 mg/ml. Do not vortex.
Storage:	Store at 2-8°C for up to one month. For long-term storage, store at -80°C. Avoid repeated freeze/thaw cycles.
UniProt Primary AC:	Q6UXB8 (UniProt , ExPASy)
Gene Symbol:	PI16
GeneID:	221476
KEGG:	hsa:221476
String:	9606.ENSP00000362778
Molecular Weight:	Calculated MW: 54.5 kDa Observed MW (SDS-PAGE): 60 kDa
Sequence Fragment:	Leu28-Gly247
Tag:	N-terminal His tag and GST tag
Buffer:	Prior to lyophilization: PBS, pH 7.4, containing 0.01% Sarcosyl, 1 mM DTT, 5% Trehalose and Proclin-300.
Concentration:	Prior to lyophilization: 200 µg/ml
Note:	THIS PRODUCT IS FOR RESEARCH USE ONLY. NOT FOR USE IN DIAGNOSTIC, THERAPEUTIC OR COSMETIC PROCEDURES. NOT FOR HUMAN OR ANIMAL CONSUMPTION.