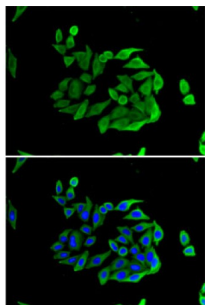


Heparanase (HPSE) Antibody

Catalogue No.: abx004379



Immunofluorescence analysis of U2OS cells using Heparanase 1 Antibody

HPSE Antibody is a Rabbit Polyclonal antibody against HPSE. Heparan sulfate proteoglycans are major components of the basement membrane and extracellular matrix. The protein encoded by this gene is an enzyme that cleaves heparan sulfate proteoglycans to permit cell movement through remodeling of the extracellular matrix. In addition, this cleavage can release bioactive molecules from the extracellular matrix. Several transcript variants encoding different isoforms have been found for this gene.

Target:	Heparanase (HPSE)
Clonality:	Polyclonal
Reactivity:	Human, Mouse, Rat
Tested Applications:	IF/ICC
Host:	Rabbit
Recommended dilutions:	IF/ICC: 1/10 - 1/100. Optimal dilutions/concentrations should be determined by the end user.
Conjugation:	Unconjugated
Immunogen:	Recombinant fusion protein corresponding to human Heparanase 1
Isotype:	IgG
Form:	Liquid
Purification:	Purified by affinity chromatography.
Storage:	Aliquot and store at -20°C. Avoid repeated freeze/thaw cycles.
UniProt Primary AC:	Q9Y251 (UniProt , ExPASy)

Datasheet

Version: 5.0.0

Revision date: 24 Jul 2025



Gene Symbol: HPSE

GeneID: [10855](#)

NCBI Accession: NP_001092010.1

String: [9606.ENSP00000384262](#)

Buffer: PBS, pH 7.3, containing 0.02% sodium azide, 50% glycerol.

Concentration: 1 mg/ml

Note: THIS PRODUCT IS FOR RESEARCH USE ONLY. NOT FOR USE IN DIAGNOSTIC, THERAPEUTIC OR COSMETIC PROCEDURES. NOT FOR HUMAN OR ANIMAL CONSUMPTION.

For Reference Only