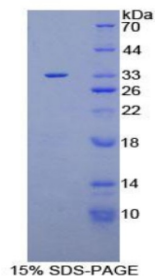


# Human Pleckstrin Homology Domain Containing Family A, Member 1 (PLEKHA1) Protein

Catalogue No.: abx068604



SDS-PAGE analysis of Human PLEKHA1 Protein.

Recombinant Pleckstrin Homology Domain Containing Family A, Member 1 (PLEKHA1) is a recombinant Human protein produced in a Prokaryotic expression system (E. coli).

<b>Target:</b>	Pleckstrin Homology Domain Containing Family A, Member 1 (PLEKHA1)
<b>Origin:</b>	Human
<b>Expression:</b>	Recombinant
<b>Tested Applications:</b>	WB, SDS-PAGE
<b>Host:</b>	E. coli
<b>Conjugation:</b>	Unconjugated
<b>Form:</b>	Lyophilized
<b>Activity:</b>	Not tested
<b>Purity:</b>	> 95%
<b>Reconstitution:</b>	To keep the original salt concentration, we recommend reconstituting to the original concentration prior to lyophilization (see Concentration) in ddH <sub>2</sub> O. If a lower concentration is required, dilute in PBS, pH 7.4. If a higher concentration is required, the product can be reconstituted directly in PBS, pH 7.4, though please note that this will change the overall salt concentration. The stock concentration should be between 0.1-1.0 mg/ml. Do not vortex.
<b>Storage:</b>	Store at 2-8°C for up to one month. For long-term storage, store at -80°C. Avoid repeated freeze/thaw cycles.
<b>UniProt Primary AC:</b>	Q9HB21 ( <a href="#">UniProt</a> , <a href="#">ExpASY</a> )

# Datasheet

Version: 2.0.0  
Revision date: 04 Oct 2025



**String:** [9606.ENSF00000357986](#)

**Molecular Weight:** Calculated MW: 32.5 kDa

**Sequence Fragment:** Leu92-Glu346

**Sequence:** LQANDQQDL VEVVNVLNKA IKITVPKQSD SQPNSDNLSR HGECGKKQVS YRTDIVGGVP  
IITPTQKEEV NECGESIDRN NLKRSQSHLP YFTPKPPQDS AVIKAGYCVK QGAVMKNWKR  
RYFQLDENTI GYFKSELEKE PLRVIPLKEV HKVQECKQSD IMMRDNLFEI VTTSRTFYVQ  
ADSPEEMHSW IKAVSGAIVA QRGPGRSASS EHPPGPSESK HAFRPTNAAT ATSHSTASRS  
NSLVSTFTME KRGFYE

**Tag:** N-terminal His tag

**Buffer:** Prior to lyophilization: PBS, pH 7.4, containing 0.01% Sarcosyl, 1 mM DTT, 5% Trehalose and Proclin-300.

**Concentration:** Prior to lyophilization: 200 µg/ml

**Note:** THIS PRODUCT IS FOR RESEARCH USE ONLY. NOT FOR USE IN DIAGNOSTIC, THERAPEUTIC OR COSMETIC PROCEDURES. NOT FOR HUMAN OR ANIMAL CONSUMPTION.

For Reference Only