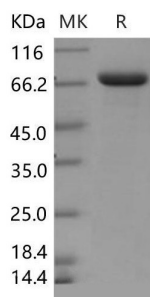


## Mouse Lactoferrin (LTF) Protein

Catalogue No.: abx691415



Mouse Lactotransferrin Protein is a recombinant Mouse protein expressed in HEK293 Cells. A DNA sequence encoding the mouse LTF (AAH06904.1) (Met 1-Gln 707) was expressed, with a C-terminal polyhistidine tag.

**Target:** Lactotransferrin (LTF)

**Origin:** Mouse

**Expression:** Recombinant

**Tested Applications:** SDS-PAGE

**Host:** HEK293 cells

**Activity:** Not tested

**Purity:** > 92% (SDS-PAGE)

**Reconstitution:** Reconstitute in sterile distilled water to a concentration of 0.25 mg/ml. This solution can be diluted further if required.

**Storage:** Store lyophilized at or below -20°C. After reconstitution, store between 4-7°C for up to 7 days, or at or below -20°C for up to 3 months. Avoid repeated freeze/thaw cycles.

**Validity:** The validity for this protein is 12 months.

**NCBI Accession:** AAH06904.1

**Molecular Weight:** Calculated MW: 77.2 kDa  
Observed MW: 70 kDa

**Sequence Fragment:** Met1-Gln707

**Tag:** C-terminal His tag

# Datasheet

Version: 5.0.0

Revision date: 14 Oct 2025



**Buffer:** Prior to lyophilization: PBS, pH 7.4, containing 5% Trehalose, 5% Mannitol, 0.01% Tween-80.

**Endotoxin Level:** < 1.0 EU per µg of protein as determined by the LAL method.

**Note:** THIS PRODUCT IS FOR RESEARCH USE ONLY. NOT FOR USE IN DIAGNOSTIC, THERAPEUTIC OR COSMETIC PROCEDURES. NOT FOR HUMAN OR ANIMAL CONSUMPTION.

For Reference Only