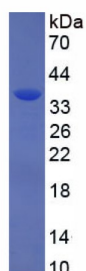


## Rat Protein Kinase C Gamma (PKCγ) Protein

Catalogue No.: abx068753



SDS-PAGE analysis of recombinant Rat Protein Kinase C Gamma (PKCγ) Protein.

Rat Protein Kinase C Gamma (PKCγ) is a recombinant Rat protein produced in a Prokaryotic expression system (E. coli).

**Target:** Protein Kinase C Gamma (PKCγ)

**Origin:** Rat

**Expression:** Recombinant

**Tested Applications:** WB, SDS-PAGE

**Host:** E. coli

**Conjugation:** Unconjugated

**Form:** Lyophilized

**Purity:** > 95%

**Reconstitution:** To keep the original salt concentration, we recommend reconstituting to the original concentration prior to lyophilization (see Concentration) in ddH<sub>2</sub>O. If a lower concentration is required, dilute in PBS, pH 7.4. If a higher concentration is required, the product can be reconstituted directly in PBS, pH 7.4, though please note that this will change the overall salt concentration. The stock concentration should be between 0.1-1.0 mg/ml. Do not vortex.

**Storage:** Store at 2-8 °C for up to one month. Store at -80 °C for up to one year. Avoid repeated freeze/thaw cycles.

**UniProt Primary AC:** P63319 ([UniProt](#), [ExPASy](#))

**KEGG:** rno:24681

**String:** [10116.ENSRNOP00000019825](#)

# Datasheet

Version: 2.0.0  
Revision date: 21 Jun 2025



**Molecular Weight:** Calculated MW: 36.3 kDa  
Observed MW: 36 kDa

**Sequence Fragment:** Phe351-Phe614

**Sequence:** FSFLMVLGKG SFGKVMLAER RGSDELYAIK ILKKDVIVQD DDVDCTLVEK RVLALGGRGP  
GGRPHFLTQL HSTFQTPDRL YFVMEYVTGG DLMYHIQQLG KFKEPHAAFY AAEIAIGLFF  
LHNQGIIYRD LKLDNVMLDA EGHKITDFG MCKENVFPGS TTRTFCGTPD YIAPEIIAYQ  
PYGKSVDWWS FGVLLYEMLA GQPPFDGEDE EELFQAIMEQ TVTYPKSLSR EAVAICKGFL  
TKHPGKRLGS GPDGEPTIRA HGFF

**Tag:** N-terminal His tag

**Buffer:** Prior to lyophilization: PBS, pH 7.4, containing 0.01% Sarcosyl, 1 mM DTT, 5% Trehalose and Proclin-300.

**Activity:** Not tested

**Concentration:** Prior to lyophilization: 200 µg/ml

**Note:** THIS PRODUCT IS FOR RESEARCH USE ONLY. NOT FOR USE IN DIAGNOSTIC, THERAPEUTIC OR COSMETIC PROCEDURES. NOT FOR HUMAN OR ANIMAL CONSUMPTION.

For Reference Only