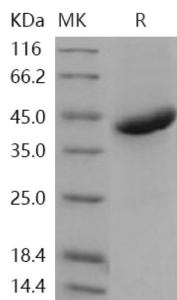


Human R-Spondin 1 (RSPO1) Protein (Active)

Catalogue No.: abx691604



SDS-PAGE analysis of recombinant Human RSPO1 Protein.

Human R-Spondin 1 Protein is a recombinant protein from Human produced in HEK293 Cells. A DNA sequence encoding the human RSPO1 (NP_001033722.1) (Met 1-Ala 263) was expressed, fused with a polyhistidine tag at the C-terminus.

Target: R-Spondin 1 (RSPO1)

Origin: Human

Expression: Recombinant

Tested Applications: SDS-PAGE

Host: HEK293 cells

Form: Lyophilized

Purity: > 95% (SDS-PAGE)

Reconstitution: Reconstitute in sterile distilled water to a concentration of 0.1 mg/ml. Do not vortex.

Storage: Store lyophilized at -20 °C or -80 °C. Upon reconstitution, store between 4-8 °C for up to 7 days, or aliquot and store at or below -20 °C for up to 3 months. Avoid repeated freeze/thaw cycles.

Validity: The validity for this protein is 12 months.

UniProt Primary AC: Q2MKA7 ([UniProt](#), [ExPASy](#))

NCBI Accession: NP_001033722.1

Molecular Weight: Calculated MW: 28.2 kDa

Observed MW (SDS-PAGE): 42 kDa

The difference between the calculated MW and observed MW is due to glycosylation.

Sequence Fragment: Met1-Ala263

Datasheet

Version: 4.0.0
Revision date: 19 May 2025



Sequence:	MRLGLCVVAL VLSWTHLTIS SRGIKGRQR RISAEGSQAC AKGCELCSEV NGCLKCSPKL FILLERNDIR QVGVCLPSCP PGYFDARNPD MNKCIKCKIE HCEACFSHNF CTKCKEGLYL HKGRCPACP EGSSAANGTM ECSSPAQCEM SEWSPWGPCS KKQQLCGFRR GSEERTRVL HAPVGDHAAC SDTKETRRCT VRRVPCPEGQ KRRKGGQGRR ENANRNLARK ESKEAGAGSR RRKGQQQQQQ QGTVGPLTSA GPA
Tag:	C-terminal His tag
Buffer:	Prior to lyophilization: PBS, pH 7.4.
Activity:	Active
Biological Activity:	<p>The biological activity was determined by measuring the binding ability in a functional ELISA. Immobilized human RSPO1 (20 µg/ml, 100 µl/well) can bind human LIMPII with a linear range of 32 ng/ml - 800 ng/ml. Immobilized human RSPO1 at 20 µg/ml (100 µl/well) can bind mouse CD36 with a linear range of 6.4 ng/ml - 800 ng/ml.</p> <p>The biological activity was determined by measuring the ability to induce activation of beta catenin response in a TOPFlash Luciferase assay using HEK293T human embryonic kidney cells. The ED50 for this effect is typically 0.1-0.9 µg/ml in the presence of recombinant mouse Wnt3a (5 ng/ml).</p>
Endotoxin Level:	< 1.0 EU per µg as determined by the LAL method.
Note:	THIS PRODUCT IS FOR RESEARCH USE ONLY. NOT FOR USE IN DIAGNOSTIC, THERAPEUTIC OR COSMETIC PROCEDURES. NOT FOR HUMAN OR ANIMAL CONSUMPTION.
Directions for use:	Centrifuge before opening to ensure complete recovery of vial contents.