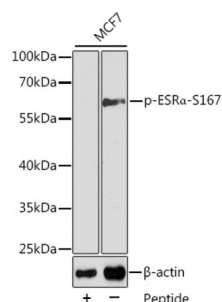


ESR1 (pS167) Antibody

Catalogue No.: abx000396



Western blot analysis of lysates from MCF7 cells using Phospho-ESRα-S167 Antibody. Secondary antibody: HRP-conjugated Goat anti-Rabbit IgG (H+L) at 1/10000 dilution. Lysates/proteins: 25 µg per lane. Blocking buffer: 3% BSA.

ESR1 (pS167) Antibody is a Rabbit Polyclonal antibody against ESR1 (pS167). This gene encodes an estrogen receptor, a ligand-activated transcription factor composed of several domains important for hormone binding, DNA binding, and activation of transcription. The protein localizes to the nucleus where it may form a homodimer or a heterodimer with estrogen receptor 2. Estrogen and its receptors are essential for sexual development and reproductive function, but also play a role in other tissues such as bone. Estrogen receptors are also involved in pathological processes including breast cancer, endometrial cancer, and osteoporosis. Alternative splicing results in several transcript variants, which differ in their 5' UTRs and use different promoters.

Target:	ESR1 (pS167)
Clonality:	Polyclonal
Reactivity:	Human
Tested Applications:	ELISA, WB, IF/ICC
Host:	Rabbit
Recommended dilutions:	ELISA: 1 µg/ml, WB: 1/500 - 1/2000, IF/ICC: 1/100 - 1/200. Optimal dilutions/concentrations should be determined by the end user.
Conjugation:	Unconjugated
Immunogen:	A synthetic phosphorylated peptide around S167 of human Estrogen Receptor alpha (ESR1).
Isotype:	IgG
Form:	Liquid
Purification:	Purified by affinity chromatography.
Storage:	Aliquot and store at -20°C. Avoid repeated freeze/thaw cycles.
UniProt Primary AC:	P03372 (UniProt , ExPASy)

Datasheet

Version: 4.0.0
Revision date: 04 Jun 2025



Gene Symbol: ESR1

GeneID: [2099](#)

NCBI Accession: NP_000116.2

KEGG: hsa:2099

String: [9606.ENSP00000405330](#)

Molecular Weight: Calculated MW: 66 kDa
Observed MW: 66 kDa

Buffer: PBS, pH 7.3, containing 0.01% thimerosal, 50% glycerol.

Concentration: > 0.2 mg/ml

Note: THIS PRODUCT IS FOR RESEARCH USE ONLY. NOT FOR USE IN DIAGNOSTIC, THERAPEUTIC OR COSMETIC PROCEDURES. NOT FOR HUMAN OR ANIMAL CONSUMPTION.

For Reference Only