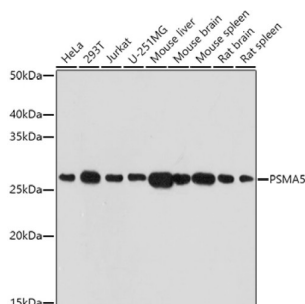
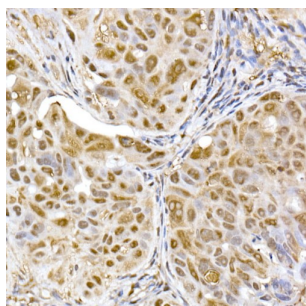


Proteasome Subunit Alpha Type 5 (PSMA5) Antibody

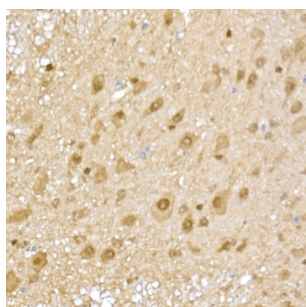
Catalogue No.: abx004401



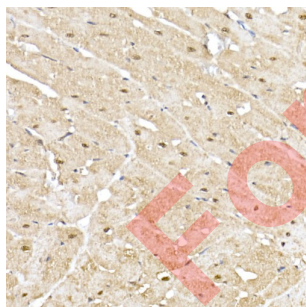
Western blot analysis of various lysates using PSMA5 Antibody at 1/1000 dilution. Secondary antibody: HRP-conjugated Goat anti-Rabbit IgG (H+L) at 1/10000 dilution. Lysates/proteins: 25 µg per lane. Blocking buffer: 3% nonfat dry milk in TBST. Exposure time: 180s.



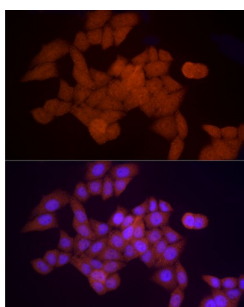
Immunohistochemistry analysis of paraffin-embedded Human colon carcinoma using PSMA5 Antibody at dilution of 1/50 (40x lens). High pressure antigen retrieval performed in 0.01 M Citrate buffer (pH 6.0) prior to IHC staining.



Immunohistochemistry analysis of paraffin-embedded Mouse spinal cord using PSMA5 Antibody at dilution of 1/50 (40x lens). High pressure antigen retrieval performed in 0.01 M Citrate buffer (pH 6.0) prior to IHC staining.



Immunohistochemistry analysis of paraffin-embedded Rat heart using PSMA5 Antibody at dilution of 1/50 (40x lens). High pressure antigen retrieval performed in 0.01 M Citrate buffer (pH 6.0) prior to IHC staining.



Immunofluorescence analysis of HeLa cells using PSMA5 Antibody at dilution of 1/50 (40x lens). Secondary antibody: Cy3-conjugated Goat anti-Rabbit IgG (H+L) at 1/500 dilution. Blue: DAPI for nuclear staining.

Datasheet

Version: 6.0.0
Revision date: 02 Oct 2025



PSMA5 Antibody is a Rabbit Polyclonal antibody against PSMA5. The proteasome is a multicatalytic proteinase complex with a highly ordered ring-shaped 20S core structure. The core structure is composed of 4 rings of 28 non-identical subunits; 2 rings are composed of 7 alpha subunits and 2 rings are composed of 7 beta subunits. Proteasomes are distributed throughout eukaryotic cells at a high concentration and cleave peptides in an ATP/ubiquitin-dependent process in a non-lysosomal pathway. An essential function of a modified proteasome, the immunoproteasome, is the processing of class I MHC peptides. This gene encodes a member of the peptidase T1A family, that is a 20S core alpha subunit. Multiple alternatively spliced transcript variants encoding two distinct isoforms have been found for this gene.

Target:	Proteasome Subunit Alpha Type 5 (PSMA5)
Clonality:	Polyclonal
Reactivity:	Human, Mouse, Rat
Tested Applications:	ELISA, WB, IHC, IF/ICC
Host:	Rabbit
Recommended dilutions:	ELISA: 1 µg/ml, WB: 1/500 - 1/1000, IHC-P: 1/50 - 1/200, IF/ICC: 1/50 - 1/200. Not tested in IHC-F. Optimal dilutions/concentrations should be determined by the end user.
Conjugation:	Unconjugated
Immunogen:	Recombinant protein corresponding to PSMA5. The exact sequence is proprietary.
Isotype:	IgG
Form:	Liquid
Purification:	Purified by affinity chromatography.
Storage:	Aliquot and store at -20°C. Avoid repeated freeze/thaw cycles.
UniProt Primary AC:	P28066 (UniProt , ExPASy)
Gene Symbol:	PSMA5
GeneID:	5686
NCBI Accession:	NP_002781.2
KEGG:	hsa:5686
String:	9606.ENSP00000271308
Molecular Weight:	Calculated MW: 26 kDa Observed MW: 27 kDa

Datasheet

Version: 6.0.0

Revision date: 02 Oct 2025



Buffer: PBS, pH 7.3, containing 0.09% sodium azide, 50% glycerol.

Concentration: > 0.2 mg/ml

Note: THIS PRODUCT IS FOR RESEARCH USE ONLY. NOT FOR USE IN DIAGNOSTIC, THERAPEUTIC OR COSMETIC PROCEDURES. NOT FOR HUMAN OR ANIMAL CONSUMPTION.

For Reference Only