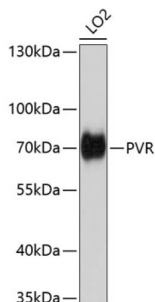


## Poliovirus Receptor (PVR) Antibody

Catalogue No.: abx004402



Western blot analysis of extracts of LO2 cells using CD155/PVR Antibody (1/1000 dilution).

PVR Antibody is a Rabbit Polyclonal antibody against PVR. The protein encoded by this gene is a transmembrane glycoprotein belonging to the immunoglobulin superfamily. The external domain mediates cell attachment to the extracellular matrix molecule vitronectin, while its intracellular domain interacts with the dynein light chain Tctex-1/DYNLT1. The gene is specific to the primate lineage, and serves as a cellular receptor for poliovirus in the first step of poliovirus replication. Multiple transcript variants encoding different isoforms have been found for this gene.

**Target:** Poliovirus Receptor (PVR)

**Clonality:** Polyclonal

**Reactivity:** Human, Mouse

**Tested Applications:** WB

**Host:** Rabbit

**Recommended dilutions:** WB: 1/500 - 1/2000. Optimal dilutions/concentrations should be determined by the end user.

**Conjugation:** Unconjugated

**Immunogen:** Recombinant fusion protein corresponding to human CD155/PVR

**Isotype:** IgG

**Form:** Liquid

**Purification:** Purified by affinity chromatography.

**Storage:** Aliquot and store at -20°C. Avoid repeated freeze/thaw cycles.

**UniProt Primary AC:** P15151 ([UniProt](#), [ExPASy](#))

# Datasheet

Version: 2.0.0  
Revision date: 13 Jun 2025



**Gene Symbol:** PVR

**GeneID:** [5817](#)

**NCBI Accession:** NP\_006496.4

**KEGG:** hsa:5817

**String:** [9606.ENSP00000402060](#)

**Molecular Weight:** Calculated MW: 39 kDa/40 kDa/42 kDa/45 kDa  
Observed MW: 70 kDa

**Buffer:** PBS, pH 7.3, containing 0.02% sodium azide, 50% glycerol.

**Concentration:** 1 mg/ml

**Note:** THIS PRODUCT IS FOR RESEARCH USE ONLY. NOT FOR USE IN DIAGNOSTIC, THERAPEUTIC OR COSMETIC PROCEDURES. NOT FOR HUMAN OR ANIMAL CONSUMPTION.

For Reference Only