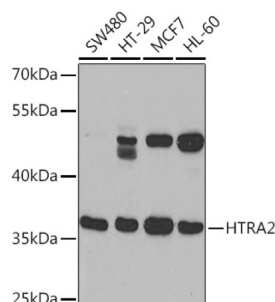
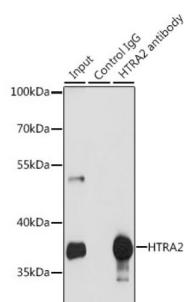


## Serine Protease HTRA2, Mitochondrial (HTRA2) Antibody

Catalogue No.: abx004410



Western blot analysis of extracts of various cell lines using HTRA2 Antibody (1/1000 dilution).



Immunoprecipitation analysis of extracts of MCF-7 cells (200 µg) using HTRA2 Antibody (3 µg). Western blot was performed from the immunoprecipitate using HTRA2 Antibody (1/1000 dilution).

HTRA2 Antibody is a Rabbit Polyclonal antibody against HTRA2. This gene encodes a serine protease. The protein has been localized in the endoplasmic reticulum and interacts with an alternatively spliced form of mitogen-activated protein kinase 14. The protein has also been localized to the mitochondria with release to the cytosol following apoptotic stimulus. The protein is thought to induce apoptosis by binding the apoptosis inhibitory protein baculoviral IAP repeat-containing 4. Nuclear localization of this protein has also been observed. Alternate splicing of this gene results in two transcript variants encoding different isoforms. Additional transcript variants have been described, but their full-length sequences have not been determined.

**Target:** Serine Protease HTRA2, Mitochondrial (HTRA2)

**Clonality:** Polyclonal

**Reactivity:** Human, Mouse, Rat

**Tested Applications:** WB, IP

**Host:** Rabbit

**Recommended dilutions:** WB: 1/500 - 1/2000, IP: 1/50 - 1/100. Optimal dilutions/concentrations should be determined by the end user.

**Conjugation:** Unconjugated

**Immunogen:** Recombinant fusion protein corresponding to human HTRA2

**Isotype:** IgG

# Datasheet

Version: 3.0.0  
Revision date: 31 Jul 2025



|                            |  |
|----------------------------|--|
| <b>Form:</b>               | Liquid   |
| <b>Purification:</b>       | Purified by affinity chromatography.   |
| <b>Storage:</b>            | Aliquot and store at -20°C. Avoid repeated freeze/thaw cycles.   |
| <b>UniProt Primary AC:</b> | O43464 ( <a href="#">UniProt</a> , <a href="#">ExPASy</a> )  |
| <b>Gene Symbol:</b>        | HTRA2  |
| <b>GeneID:</b>             | <a href="#">27429</a>  |
| <b>NCBI Accession:</b>     | NP_037379.1  |
| <b>Molecular Weight:</b>   | Calculated MW: 38 kDa/39 kDa/46 kDa/48 kDa<br>Observed MW: 36 kDa  |
| <b>Buffer:</b>             | PBS, pH 7.3, containing 0.02% sodium azide, 50% glycerol.  |
| <b>Concentration:</b>      | 1 mg/ml  |
| <b>Note:</b>               | THIS PRODUCT IS FOR RESEARCH USE ONLY. NOT FOR USE IN DIAGNOSTIC, THERAPEUTIC OR COSMETIC PROCEDURES. NOT FOR HUMAN OR ANIMAL CONSUMPTION. |

For Reference Only