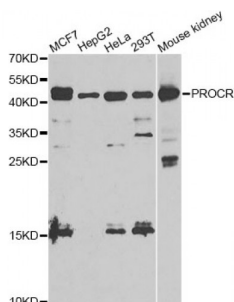


Protein C Receptor, Endothelial (PROCR) Antibody

Catalogue No.: abx004411



Western blot analysis of extracts of various cell lines, using PROCR antibody (abx004411) at 1/1000 dilution.

PROCR Antibody is a Rabbit Polyclonal antibody against PROCR. The protein encoded by this gene is a receptor for activated protein C, a serine protease activated by and involved in the blood coagulation pathway. The encoded protein is an N-glycosylated type I membrane protein that enhances the activation of protein C. Mutations in this gene have been associated with venous thromboembolism and myocardial infarction, as well as with late fetal loss during pregnancy. The encoded protein may also play a role in malarial infection and has been associated with cancer.

Target:	Protein C Receptor, Endothelial (PROCR)
Clonality:	Polyclonal
Reactivity:	Human, Mouse
Tested Applications:	WB
Host:	Rabbit
Recommended dilutions:	WB: 1/500 - 1/2000. Optimal dilutions/concentrations should be determined by the end user.
Conjugation:	Unconjugated
Immunogen:	Recombinant fusion protein containing a sequence corresponding to amino acids 18-210 of human PROCR.
Isotype:	IgG
Form:	Liquid
Purification:	Purified by affinity chromatography.
Storage:	Aliquot and store at -20°C. Avoid repeated freeze/thaw cycles.
UniProt Primary AC:	Q9UNN8 (UniProt , ExPASy)

Datasheet

Version: 5.0.0

Revision date: 02 Jun 2024



Gene Symbol: PROCR

GeneID: [10544](#)

NCBI Accession: NP_006395.2

String: [9606.ENSP00000216968](#)

Molecular Weight: Calculated MW: 27 kDa
Observed MW: 45 kDa

Buffer: PBS, pH 7.3, containing 0.02% sodium azide, 50% glycerol.

Concentration: > 0.2 mg/ml

Note: This product is for research use only.

For Reference Only