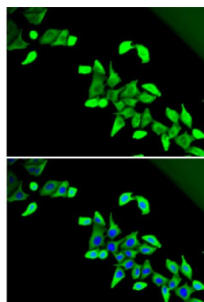


CDK5 Regulatory Subunit Associated Protein 1 Like 1 (CDKAL1) Antibody

Catalogue No.: abx004419



Immunofluorescence analysis of U2OS cells using CDKAL1 Antibody

CDKAL1 Antibody is a Rabbit Polyclonal antibody against CDKAL1. The protein encoded by this gene is a member of the methyltransferase family. The function of this gene is not known. Genome-wide association studies have linked single nucleotide polymorphisms in an intron of this gene with susceptibility to type 2 diabetes.

Target:	CDK5 Regulatory Subunit Associated Protein 1 Like 1 (CDKAL1)
Clonality:	Polyclonal
Reactivity:	Human, Mouse
Tested Applications:	IF/ICC
Host:	Rabbit
Recommended dilutions:	IF/ICC: 1/10 - 1/100. Optimal dilutions/concentrations should be determined by the end user.
Conjugation:	Unconjugated
Immunogen:	Recombinant fusion protein corresponding to human CDKAL1
Isotype:	IgG
Form:	Liquid
Purification:	Purified by affinity chromatography.
Storage:	Aliquot and store at -20°C. Avoid repeated freeze/thaw cycles.
UniProt Primary AC:	Q5VV42 (UniProt , ExPASy)

Datasheet

Version: 3.0.0
Revision date: 14 Oct 2025



Gene Symbol: CDKAL1

GeneID: [54901](#)

NCBI Accession: NP_060244.2

KEGG: hsa:54901

String: [9606.ENSP00000274695](#)

Buffer: PBS, pH 7.3, containing 0.02% sodium azide, 50% glycerol.

Concentration: 1 mg/ml

Note: THIS PRODUCT IS FOR RESEARCH USE ONLY. NOT FOR USE IN DIAGNOSTIC, THERAPEUTIC OR COSMETIC PROCEDURES. NOT FOR HUMAN OR ANIMAL CONSUMPTION.

For Reference Only