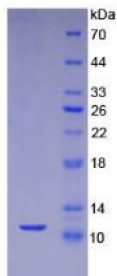


Mouse Stromal Cell-Derived Factor 1 / SDF1 (CXCL12) Protein

Catalogue No.: abx069178



SDS-PAGE analysis of Mouse SDF1 Protein.

Mouse Stromal Cell-Derived Factor 1 / SDF1 (CXCL12) is a recombinant Mouse protein produced in a Prokaryotic expression system (E. coli).

Target: Stromal Cell-Derived Factor 1 / SDF1 (CXCL12)

Origin: Mouse

Expression: Recombinant

Tested Applications: WB, SDS-PAGE

Host: E. coli

Conjugation: Unconjugated

Form: Lyophilized

Purity: > 97%

Reconstitution: To keep the original salt concentration, we recommend reconstituting to the original concentration prior to lyophilization (see Concentration) in ddH₂O. If a lower concentration is required, dilute in 20 mM Tris, 150 mM NaCl, pH 8.0. If a higher concentration is required, the product can be reconstituted directly in 20 mM Tris, 150 mM NaCl, pH 8.0, though please note that this will change the overall salt concentration. The stock concentration should be between 0.1-1.0 mg/ml. Do not vortex.

Storage: Store at 2-8 °C for up to one month. Store at -80 °C for up to one year. Avoid repeated freeze/thaw cycles.

UniProt Primary AC: P40224 ([UniProt](#), [ExPASy](#))

Gene Symbol: CXCL12

GenelD: [20315](#)

Datasheet

Version: 3.0.0
Revision date: 28 Jun 2025



KEGG:	mmu:20315
Ensembl:	ENSMUSG00000061353
String:	10090.ENSMUSP00000072800
Molecular Weight:	Calculated MW: 9.2 kDa Observed MW (SDS-PAGE): 11 kDa
Sequence Fragment:	Lys22-Lys89
Sequence:	KPVSLSYRC PCRFFESHIA RANVKHLKIL NTPNCALQIV ARLKNNNRQV CIDPKLKWIQ EYLEKALNK
Tag:	N-terminal His tag
Buffer:	Prior to lyophilization: 20 mM Tris, 150 mM NaCl, pH 8.0, containing 1 mM EDTA, 1 mM DTT, 0.01% Sarcosyl, 5% Trehalose and Proclin-300.
Activity:	Not tested
Concentration:	Prior to lyophilization: 200 µg/ml
Note:	THIS PRODUCT IS FOR RESEARCH USE ONLY. NOT FOR USE IN DIAGNOSTIC, THERAPEUTIC OR COSMETIC PROCEDURES. NOT FOR HUMAN OR ANIMAL CONSUMPTION.