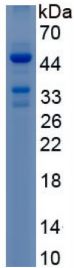
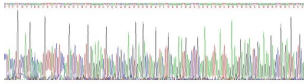


Human Extracellular Sulfatase Sulf-1 (SULF1) Protein

Catalogue No.: abx069184



SDS-PAGE analysis of recombinant Human Extracellular Sulfatase Sulf-1 (SULF1) Protein.



Gene sequencing extract of recombinant Human Extracellular Sulfatase Sulf-1 (SULF1) Protein.

Human Extracellular Sulfatase Sulf-1 (SULF1) is a recombinant Human protein expressed in E. coli. This protein is the immunogen for the following antibody: [abx101037](#)

Target: Extracellular Sulfatase Sulf-1 (SULF1)

Research Area: Enzymes and Kinases

Origin: Human

Expression: Recombinant

Tested Applications: WB, SDS-PAGE

Host: E. coli

Conjugation: Unconjugated

Form: Lyophilized

Activity: Not tested

Purity: > 80%

Datasheet

Version: 7.0.0
Revision date: 12 Oct 2025



- Reconstitution:** To keep the original salt concentration, we recommend reconstituting to the original concentration prior to lyophilization (see Concentration) in ddH₂O. If a lower concentration is required, dilute in 10 mM PBS, pH 7.4. If a higher concentration is required, the product can be reconstituted directly in 10 mM PBS, pH 7.4, though please note that this will change the overall salt concentration. The stock concentration should be between 0.1-1.0 mg/ml. Do not vortex.
- Storage:** Store at 2-8°C for up to one month. For long-term storage, store at -80°C. Avoid repeated freeze/thaw cycles.
- UniProt Primary AC:** Q8IWU6 ([UniProt](#), [ExpASY](#))
- KEGG:** hsa:23213
- String:** [9606.ENSP00000260128](#)
- Molecular Weight:** Calculated MW: 44.8 kDa
Observed MW (SDS-PAGE): 35 kDa, 45 kDa
- Sequence Fragment:** Pro609-Gly871
- Sequence:** PT TVRVTHKCFI LPNDSIH CER ELYQSARAWK DHKAYIDKEI EALQDKIKNL REVRGHLKRR
KPEECSCSKQ SYYNKEKGVK KQEKLKSHLH PFKEAAQEVD SKLQLFKENN RRRKKERKEK
RRQRKGEECS LPGLTCFTHD NNHWQTAPFW NLGSFCACTS SNNNTYWCLR TVNETHNFLF
CEFATGFLEY FDMNTDPYQL TNTVHTVERG ILNQLHVQLM ELRSCQGYKQ CNPRPKNL DV
GNKDGGSYDL HRGQLWDGWE G
- Tag:** N-terminal His tag and SUMO tag
- Buffer:** Prior to lyophilization: PBS, pH 7.4, containing 0.01% Sarcosyl, 5% Trehalose.
- Concentration:** Prior to lyophilization: 200 µg/ml
- Note:** THIS PRODUCT IS FOR RESEARCH USE ONLY. NOT FOR USE IN DIAGNOSTIC, THERAPEUTIC OR COSMETIC PROCEDURES. NOT FOR HUMAN OR ANIMAL CONSUMPTION.