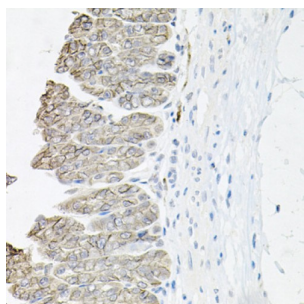
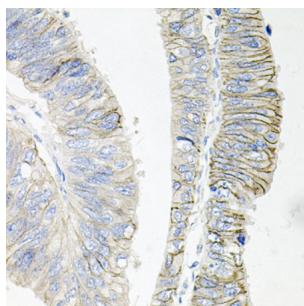


## ATPase, Na<sup>+</sup>/K<sup>+</sup> Transporting Beta 1 Polypeptide (ATP1B1) Antibody

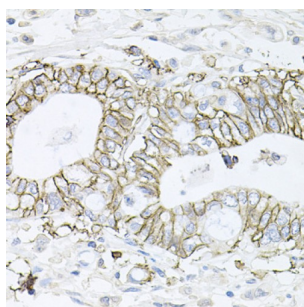
Catalogue No.: abx004438



Immunohistochemistry of paraffin-embedded Mouse stomach using ATP1B1 Antibody (1/100 dilution, 40x lens).



Immunohistochemistry of paraffin-embedded Human colon carcinoma using ATP1B1 Antibody (1/100 dilution, 40x lens).



Immunohistochemistry of paraffin-embedded Human gastric cancer using ATP1B1 Antibody (1/100 dilution, 40x lens).

ATP1B1 Antibody is a Rabbit Polyclonal antibody against ATP1B1. The protein encoded by this gene belongs to the family of Na<sup>+</sup>/K<sup>+</sup> and H<sup>+</sup>/K<sup>+</sup> ATPases beta chain proteins, and to the subfamily of Na<sup>+</sup>/K<sup>+</sup> -ATPases. Na<sup>+</sup>/K<sup>+</sup> -ATPase is an integral membrane protein responsible for establishing and maintaining the electrochemical gradients of Na and K ions across the plasma membrane. These gradients are essential for osmoregulation, for sodium-coupled transport of a variety of organic and inorganic molecules, and for electrical excitability of nerve and muscle. This enzyme is composed of two subunits, a large catalytic subunit (alpha) and a smaller glycoprotein subunit (beta). The beta subunit regulates, through assembly of alpha/beta heterodimers, the number of sodium pumps transported to the plasma membrane. The glycoprotein subunit of Na<sup>+</sup>/K<sup>+</sup> -ATPase is encoded by multiple genes. This gene encodes a beta 1 subunit. Alternatively spliced transcript variants encoding different isoforms have been described, but their biological validity is not known.

**Target:** ATPase, Na<sup>+</sup>/K<sup>+</sup> Transporting Beta 1 Polypeptide (ATP1B1)

**Clonality:** Polyclonal

**Reactivity:** Human, Mouse

**Tested Applications:** IHC

# Datasheet

Version: 4.0.0  
Revision date: 07 Jun 2025



**Host:** Rabbit

**Recommended dilutions:** IHC-P: 1/50 - 1/200. Not tested in IHC-F. Optimal dilutions/concentrations should be determined by the end user.

**Conjugation:** Unconjugated

**Immunogen:** Recombinant fusion protein corresponding to human ATP1B1

**Isotype:** IgG

**Form:** Liquid

**Purification:** Purified by affinity chromatography.

**Storage:** Aliquot and store at -20°C. Avoid repeated freeze/thaw cycles.

**UniProt Primary AC:** P05026 ([UniProt](#), [ExPASy](#))

**Gene Symbol:** ATP1B1

**GeneID:** [481](#)

**NCBI Accession:** NP\_001668.1

**KEGG:** hsa:481

**String:** [9606.ENSP00000356790](#)

**Buffer:** PBS, pH 7.3, containing 0.02% sodium azide, 50% glycerol.

**Concentration:** 1 mg/ml

**Note:** THIS PRODUCT IS FOR RESEARCH USE ONLY. NOT FOR USE IN DIAGNOSTIC, THERAPEUTIC OR COSMETIC PROCEDURES. NOT FOR HUMAN OR ANIMAL CONSUMPTION.