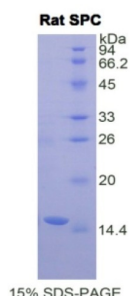


Rat Pulmonary Surfactant-Associated Protein C (SFTPC) Protein

Catalogue No.: abx069213



SDS-PAGE analysis of Rat SPC Protein.

Recombinant Pulmonary Surfactant-Associated Protein C (SFTPC) is a recombinant Rat protein produced in a Prokaryotic expression system (*E. coli*).

Target: Pulmonary Surfactant-Associated Protein C (SFTPC)

Origin: Rat

Expression: Recombinant

Tested Applications: WB, SDS-PAGE

Host: *E. coli*

Conjugation: Unconjugated

Form: Lyophilized

Purity: > 95%

Reconstitution: To keep the original salt concentration, we recommend reconstituting to the original concentration prior to lyophilization (see Concentration) in ddH₂O. If a lower concentration is required, dilute in PBS, pH 7.4. If a higher concentration is required, the product can be reconstituted directly in PBS, pH 7.4, though please note that this will change the overall salt concentration. The stock concentration should be between 0.1-1.0 mg/ml. Do not vortex.

Storage: Store at 2-8 °C for up to one month. Store at -80 °C for up to one year. Avoid repeated freeze/thaw cycles.

UniProt Primary AC: P11685 ([UniProt](#), [ExPASy](#))

Gene Symbol: SFTPC

GenelD: [50683](#)

Datasheet

Version: 4.0.0
Revision date: 16 Jun 2025



KEGG: rno:50683

String: [10116.ENSRNOP00000015032](#)

Molecular Weight: Calculated MW: 12.3 kDa

Sequence Fragment: Phe95-Ile194

Sequence: FSIGST GIVLYDYQRL LTAYKPAPGT YCYIMKMAPE SIPSLEALAR KFKNFQAKSS TPTSKLGQEE
GHSAGSDSDS SGRDLAFLGL AVSTLCGELP LYYI

Tag: N-terminal His tag

Buffer: Prior to lyophilization: PBS, pH 7.4, containing 0.01% Sarcosyl, 1 mM DTT, 5% Trehalose and Proclin-300.

Activity: Not tested

Concentration: Prior to lyophilization: 200 µg/ml

Note: THIS PRODUCT IS FOR RESEARCH USE ONLY. NOT FOR USE IN DIAGNOSTIC, THERAPEUTIC OR COSMETIC PROCEDURES. NOT FOR HUMAN OR ANIMAL CONSUMPTION.

For Reference Only