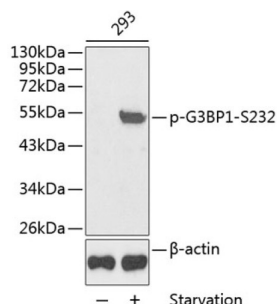


## G3BP1 (pS232) Antibody

Catalogue No.: abx000400



Western blot analysis of lysates from 293 cells, using Phospho-G3BP1-S232 Antibody. Secondary antibody: HRP-conjugated Goat anti-Rabbit IgG (H+L) at 1/10000 dilution. Lysates/proteins: 25 µg per lane. Blocking buffer: 3% BSA.

G3BP1 (pS232) Antibody is a Rabbit Polyclonal antibody against G3BP1 (pS232). This gene encodes one of the DNA-unwinding enzymes which prefers partially unwound 3'-tailed substrates and can also unwind partial RNA/DNA and RNA/RNA duplexes in an ATP-dependent fashion. This enzyme is a member of the heterogeneous nuclear RNA-binding proteins and is also an element of the Ras signal transduction pathway. It binds specifically to the Ras-GTPase-activating protein by associating with its SH3 domain. Several alternatively spliced transcript variants of this gene have been described, but the full-length nature of some of these variants has not been determined.

**Target:** G3BP1 (pS232)

**Clonality:** Polyclonal

**Reactivity:** Human

**Tested Applications:** WB, IF/ICC

**Host:** Rabbit

**Recommended dilutions:** WB: 1/500 - 1/2000, IF/ICC: 1/100 - 1/200. Optimal dilutions/concentrations should be determined by the end user.

**Conjugation:** Unconjugated

**Immunogen:** A phospho specific peptide corresponding to residues surrounding S232 of human Phospho-G3BP1-S232

**Isotype:** IgG

**Form:** Liquid

**Purification:** Purified by affinity chromatography.

**Storage:** Aliquot and store at -20°C. Avoid repeated freeze/thaw cycles.

**UniProt Primary AC:** Q13283 ([UniProt](#), [ExPASy](#))

# Datasheet

Version: 3.0.0  
Revision date: 17 Jun 2025



**Gene Symbol:** G3BP1

**GeneID:** [10146](#)

**KEGG:** hsa:10146

**String:** [9606.ENSP00000377681](#)

**Molecular Weight:** Calculated MW: 52 kDa  
Observed MW: 52 kDa

**Buffer:** PBS, pH 7.3, containing 0.02% sodium azide, 50% glycerol.

**Concentration:** > 0.2 mg/ml

**Note:** THIS PRODUCT IS FOR RESEARCH USE ONLY. NOT FOR USE IN DIAGNOSTIC, THERAPEUTIC OR COSMETIC PROCEDURES. NOT FOR HUMAN OR ANIMAL CONSUMPTION.

For Reference Only