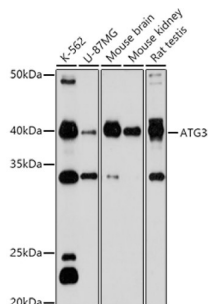
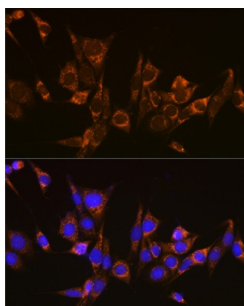


Ubiquitin-Like-Conjugating Enzyme ATG3 (ATG3) Antibody

Catalogue No.: abx004451



Western blot analysis of various lysates using ATG3 Antibody at 1/1000 dilution. Secondary antibody: HRP-conjugated Goat anti-Rabbit IgG (H+L) at 1/10000 dilution. Lysates/proteins: 25 µg per lane. Blocking buffer: 3% nonfat dry milk in TBST. Exposure time: 180s.



Immunofluorescence analysis of NIH-3T3 cells using ATG3 Antibody at dilution of 1/100 (40x lens). Secondary antibody: Cy3-conjugated Goat anti-Rabbit IgG (H+L) at 1/500 dilution. Blue: DAPI for nuclear staining.

ATG3 Antibody is a Rabbit Polyclonal antibody against ATG3. This gene encodes a ubiquitin-like-conjugating enzyme and is a component of ubiquitination-like systems involved in autophagy, the process of degradation, turnover and recycling of cytoplasmic constituents in eukaryotic cells. This protein is known to play a role in regulation of autophagy during cell death. A pseudogene of this gene is located on chromosome 20. Alternative splicing results in multiple transcript variants encoding different isoforms.

Target: Ubiquitin-Like-Conjugating Enzyme ATG3 (ATG3)

Clonality: Polyclonal

Reactivity: Human, Mouse, Rat

Tested Applications: ELISA, WB, IF/ICC

Host: Rabbit

Recommended dilutions: ELISA: 1 µg/ml, WB: 1/500 - 1/1000, IF/ICC: 1/50 - 1/200. Optimal dilutions/concentrations should be determined by the end user.

Conjugation: Unconjugated

Immunogen: Recombinant protein corresponding to ATG3. The exact sequence is proprietary.

Isotype: IgG

Datasheet

Version: 4.0.0
Revision date: 27 Aug 2025



Form:	Liquid
Purification:	Purified by affinity chromatography.
Storage:	Aliquot and store at -20°C. Avoid repeated freeze/thaw cycles.
UniProt Primary AC:	Q9NT62 (UniProt , ExPASy)
Gene Symbol:	ATG3
GeneID:	64422
OMIM:	609606
NCBI Accession:	NP_071933.2
HGNC:	20962
KEGG:	hsa:64422
Ensembl:	ENSG00000144848
String:	9606.ENSP00000283290
Molecular Weight:	Calculated MW: 36 kDa Observed MW: 40 kDa
Buffer:	PBS, pH 7.3, containing 0.02% sodium azide, 50% glycerol.
Concentration:	> 0.2 mg/ml
Note:	THIS PRODUCT IS FOR RESEARCH USE ONLY. NOT FOR USE IN DIAGNOSTIC, THERAPEUTIC OR COSMETIC PROCEDURES. NOT FOR HUMAN OR ANIMAL CONSUMPTION.