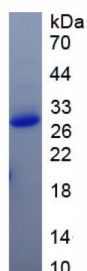
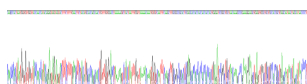


SARS-CoV-2 Spike Protein

Catalogue No.: abx655879



SDS-PAGE analysis of recombinant SARS-CoV-2 Spike Protein.



Gene sequencing extract of SARS-CoV-2 Spike Protein.

SARS-CoV-2/COVID-19 Spike Protein is a recombinant protein expressed in *E. coli*.

The SARS-CoV-2 Spike Protein (S protein) is a viral protein that allows the entry of SARS-CoV-2 into human cells. The protein forms trimers on the viral capsid and binds to human Angiotensin Converting Enzyme 2 (ACE2) located on the cell surface. The protein has a cleavage site between the S1 and S2 subunits that is targeted by the human enzyme Furin, and it may also cause the development of a syncytium (cell fusion). Antibodies to S protein can prevent viral entry as well as target the virus for further immune action.

Target: Severe Acute Respiratory Syndrome Coronavirus 2 (SARS-CoV-2) Spike Glycoprotein

Origin: Virus

Expression: Recombinant

Tested Applications: WB, SDS-PAGE

Host: *E. coli*

Conjugation: Unconjugated

Form: Lyophilized

Purity: > 90%

Datasheet

Version: 5.0.0
Revision date: 29 Apr 2025



Reconstitution:	Reconstitute in ddH ₂ O to a concentration of 0.1-1.0 mg/ml. Do not vortex.
Storage:	Store at 2-8 °C for up to one month. Store at -80 °C for up to one year. Avoid repeated freeze/thaw cycles.
Molecular Weight:	Calculated MW: 29.5 kDa Observed MW (SDS-PAGE): 29 kDa
Sequence Fragment:	Arg319-Phe541
Sequence:	RV QPTESIVRFP NITNLCPFGE VFNATRFASV YAWNRRKRISN CVADYSVLYN SASFSTFKCY GVSP TKLNDL CFTNVYADSF VIRGDEVRQI APGQTGKIAD YNYKLPDDFT GCVIWNSNN LDSKVG GNYN YLYRLF RKS N LKPFERDIST EIYQAGSTPC NGVEGFNCYF PLQSYGFQPT NGVG YQP YRV VVLSFELLHA PATVCGPKKS TNLVKNKCVN F
Tag:	N-terminal His tag
Buffer:	Prior to lyophilization: 20 mM Tris, 150 mM NaCl, pH 8.0, containing 0.01% Sarcosyl, 5% Trehalose.
Activity:	Not tested
Concentration:	Prior to lyophilization: 100 µg/ml
Note:	THIS PRODUCT IS FOR RESEARCH USE ONLY. NOT FOR USE IN DIAGNOSTIC, THERAPEUTIC OR COSMETIC PROCEDURES. NOT FOR HUMAN OR ANIMAL CONSUMPTION.