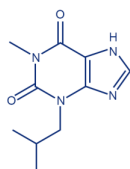


IBMX

Catalogue No.: abx282002



IBMX Chemical Structure

IBMX is a small molecule which can act as a Phosphodiesterase (PDE) inhibitor, pan specific. It is provided as a white powder. Melting point: 200-201 °C

This product acts on the following target types: PDE (Phosphodiesterase), GPCR.

This product acts on the following biochemical pathways: cAMP signaling, Lipid signaling, TNF, Cytokine.

This product may be of interest in the following research areas and diseases: Neuroscience, Immunology, Addiction, Inflammation.

Please note that our chemical products are for scientific research use only in a laboratory and are not for medical or veterinary use. This product can only be dispatched to a scientific business or laboratory address.

Target: IBMX

Form: Solid

Purity: > 99% (TLC). Conforms to structure by NMR.

Reconstitution: Soluble in DMSO (15 mg/ml) or ethanol (10 mg/ml).

Storage: Store desiccated at room temperature for up to 2 years. Solutions can be stored at -20 °C for up to 3 months.

Molecular Weight: 222.3 g/mol

Molecular Formula: C₁₀H₁₄N₄O₂

Buffer: Not applicable.

CAS Number: 28822-58-4

Note: THIS PRODUCT IS FOR RESEARCH USE ONLY. NOT FOR USE IN DIAGNOSTIC, THERAPEUTIC OR COSMETIC PROCEDURES. NOT FOR HUMAN OR ANIMAL CONSUMPTION.