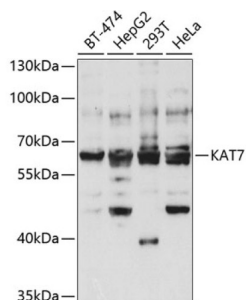
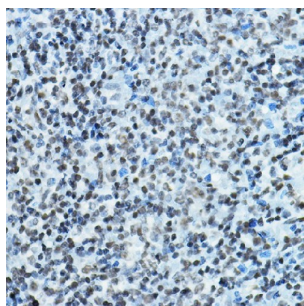


Histone Acetyltransferase KAT7 (KAT7) Antibody

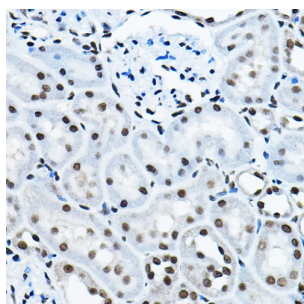
Catalogue No.: abx004463



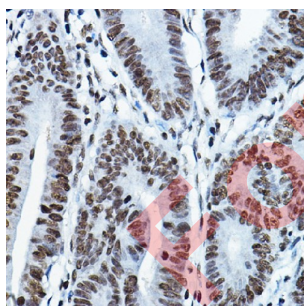
Western blot analysis of extracts of various cell lines using KAT7 Antibody (1/1000 dilution).



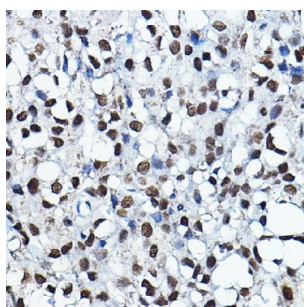
Immunohistochemistry of paraffin-embedded rat spleen using KAT7 Antibody (1/100 dilution, 40x lens). Microwave antigen retrieval was performed in 10 mM PBS buffer pH 7.2 before commencing with IHC staining protocol.



Immunohistochemistry of paraffin-embedded rat kidney using KAT7 antibody (1/100 dilution, 40x lens). Microwave antigen retrieval was performed in 10 mM PBS buffer pH 7.2 before commencing with IHC staining protocol.



Immunohistochemistry of paraffin-embedded human colon carcinoma using KAT7 antibody (1/100 dilution, 40x lens). Microwave antigen retrieval was performed in 10 mM PBS buffer pH 7.2 before commencing with IHC staining protocol.

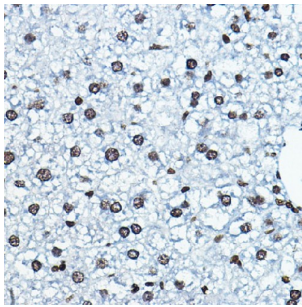


Immunohistochemistry of paraffin-embedded human breast cancer using KAT7 antibody (1/100 dilution, 40x lens). Microwave antigen retrieval was performed in 10 mM PBS buffer pH 7.2 before commencing with IHC staining protocol.

Datasheet

Version: 4.0.0

Revision date: 24 May 2025



Immunohistochemistry of paraffin-embedded mouse liver using KAT7 antibody (1/100 dilution, 40x lens). Microwave antigen retrieval was performed in 10 mM PBS buffer pH 7.2 before commencing with IHC staining protocol.

KAT7 Antibody is a Rabbit Polyclonal antibody against KAT7. MYST2, also named as HBO1, HBOa MOZ, YBF2/SAS3, SAS2 and TIP60 protein 2, belongs to the MYST (SAS/MOZ) family. It specifically represses AR mediated transcription. MYST2 is a candidate oncogene. It enhances the anchorage-independent growth of breast cancer cells. (PMID:19372580) MYST2 is a histone acetyltransferase (HAT) which could exert oncogenic function in breast cancer. It is an important downstream molecule of ERα, and ERK1/2 signaling pathway may involved in the expression of HBO1 increased by E2.

Target:	Histone Acetyltransferase KAT7 (KAT7)
Clonality:	Polyclonal
Reactivity:	Human, Mouse, Rat
Tested Applications:	WB, IHC
Host:	Rabbit
Recommended dilutions:	WB: 1/500 - 1/2000, IHC-P: 1/50 - 1/200. Not tested in IHC-F. Optimal dilutions/concentrations should be determined by the end user.
Conjugation:	Unconjugated
Immunogen:	Recombinant fusion protein corresponding to human KAT7
Isotype:	IgG
Form:	Liquid
Purification:	Purified by affinity chromatography.
Storage:	Aliquot and store at -20°C. Avoid repeated freeze/thaw cycles.
UniProt Primary AC:	O95251 (UniProt , ExPASy)
Gene Symbol:	KAT7
GeneID:	11143

Datasheet

Version: 4.0.0

Revision date: 24 May 2025



NCBI Accession: NP_008998.1

KEGG: hsa:11143

String: [9606.ENSP00000259021](https://string-db.org/cgi/show.do?query=9606.ENSP00000259021)

Molecular Weight: Calculated MW: 51 kDa/55 kDa/58 kDa/66 kDa/70 kDa
Observed MW: 63 kDa

Buffer: PBS, pH 7.3, containing 0.02% sodium azide, 50% glycerol.

Concentration: 1 mg/ml

Note: THIS PRODUCT IS FOR RESEARCH USE ONLY. NOT FOR USE IN DIAGNOSTIC, THERAPEUTIC OR COSMETIC PROCEDURES. NOT FOR HUMAN OR ANIMAL CONSUMPTION.

For Reference Only