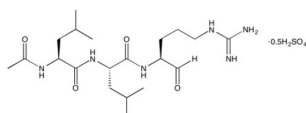


Leupeptin hemisulfate

Catalogue No.: abx282258



Leupeptin hemisulfate is a small molecule which can act as a Trypsin-like and cysteine protease inhibitor. It is provided as a white powder.

This product acts on the following target types: Protease.

This product acts on the following biochemical pathways: Apoptosis inhibitor.

This product may be of interest in the following research areas and diseases: Cell death.

Please note that our chemical products are for scientific research use only in a laboratory and are not for medical or veterinary use. This product can only be dispatched to a scientific business or laboratory address.

Target:	Leupeptin hemisulfate
Recommended dilutions:	Typical working concentration: 1 µM (0.5 µg/ml). Optimal dilutions/concentrations should be determined by the end user.
Form:	Solid
Purity:	> 97.0% (HPLC). Conforms to structure by NMR. Peptide content: > 85%
Reconstitution:	Soluble in water (50 mg/ml) or ethanol or methanol.
Storage:	Store desiccated at -20 °C for up to 2 years. Solutions can be stored at -20 °C for up to 3 months.
Molecular Weight:	475.6 g/mol
Molecular Formula:	C ₂₀ H ₃₆ N ₆ O ₄ · 1/2H ₂ SO ₄
Buffer:	Not applicable.
CAS Number:	103476-89-7

Datasheet

Version: 3.0.0

Revision date: 10 Jun 2025



Note:

THIS PRODUCT IS FOR RESEARCH USE ONLY. NOT FOR USE IN DIAGNOSTIC, THERAPEUTIC OR COSMETIC PROCEDURES. NOT FOR HUMAN OR ANIMAL CONSUMPTION.

For Reference Only