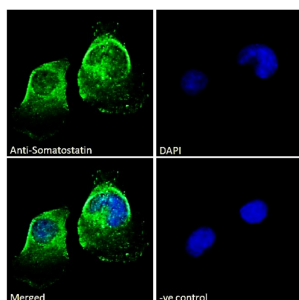
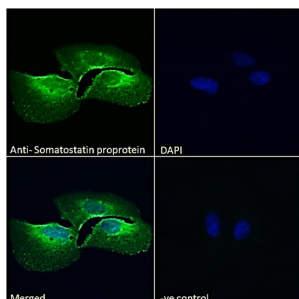


## Somatostatin Proprotein (SST) Antibody

Catalogue No.: abx433606



IF analysis of U251 cells, using Somatostatin Proprotein (SST) Antibody (10 ug/ml) followed by secondary antibody conjugated to Alexa Fluor 488 (2ug/ml). DAPI was used for nuclear staining. Non-specific Goat IgG antibody was used as a negative control (10 ug/ml).



IF analysis of U2OS cells, using Somatostatin Proprotein (SST) Antibody (10 ug/ml) followed by secondary antibody conjugated to Alexa Fluor 488 (2ug/ml). DAPI was used for nuclear staining. Non-specific Goat IgG antibody was used as a negative control (10 ug/ml).

Somatostatin Proprotein (SST) Antibody is a Goat Polyclonal antibody against Somatostatin Proprotein (SST).

**Target:** Somatostatin Proprotein (SST)

**Clonality:** Polyclonal

**Reactivity:** Human

**Tested Applications:** P-ELISA, IF/ICC

**Host:** Goat

**Recommended dilutions:** P-ELISA: 1/1000. Optimal dilutions/concentrations should be determined by the end user.

**Conjugation:** Unconjugated

**Immunogen:** [abx617006](#) - C-Terminus: C-SEPNQTENDALEP

**Form:** Liquid

**Purification:** Purified from goat serum by ammonium sulphate precipitation followed by antigen affinity chromatography using the immunizing peptide.

**Storage:** Aliquot and store at -20°C. Avoid repeated freeze/thaw cycles.

# Datasheet

Version: 1.0.0

Revision date: 07 Sep 2025



**Gene Symbol:** SST

**GeneID:** [6750](#)

**NCBI Accession:** NP\_001039.1

**Buffer:** Tris saline, pH 7.3, containing 0.02% sodium azide and 0.5% bovine serum albumin.

**Concentration:** 0.5 mg/ml

**Note:** THIS PRODUCT IS FOR RESEARCH USE ONLY. NOT FOR USE IN DIAGNOSTIC, THERAPEUTIC OR COSMETIC PROCEDURES. NOT FOR HUMAN OR ANIMAL CONSUMPTION.

For Reference Only