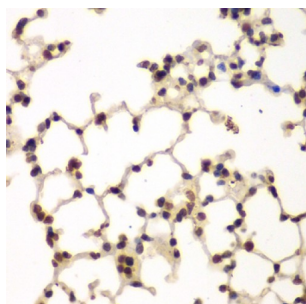
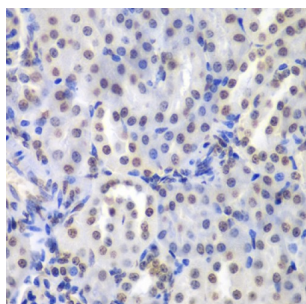


Protein Kinase C Beta (PRKCB) Antibody

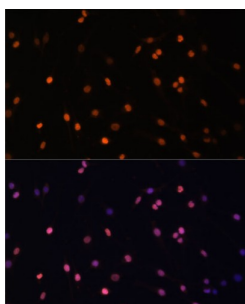
Catalogue No.: abx004482



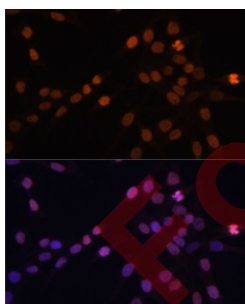
Immunohistochemistry of paraffin-embedded Mouse lung using PRKCB Antibody (1/200 dilution, 40x lens).



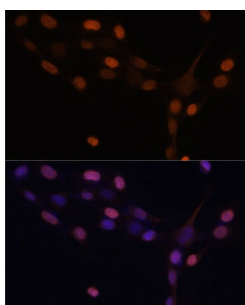
Immunohistochemistry of paraffin-embedded Mouse kidney using PRKCB Antibody (1/200 dilution, 40x lens).



Immunofluorescence analysis of C6 cells using PRKCB Antibody (1/100 dilution, 40x lens).
Blue: DAPI for nuclear staining.



Immunofluorescence analysis of HeLa cells using PRKCB Antibody (1/100 dilution, 40x lens).
Blue: DAPI for nuclear staining.



Immunofluorescence analysis of NIH-3T3 cells using PRKCB Antibody (1/100 dilution, 40x lens). Blue: DAPI for nuclear staining.

Datasheet

Version: 3.0.0
Revision date: 29 Sep 2025



PRKCB Antibody is a Rabbit Polyclonal antibody against PRKCB. Protein kinase C (PKC) is a family of serine- and threonine-specific protein kinases that can be activated by calcium and second messenger diacylglycerol. PKC family members phosphorylate a wide variety of protein targets and are known to be involved in diverse cellular signaling pathways. PKC family members also serve as major receptors for phorbol esters, a class of tumor promoters. Each member of the PKC family has a specific expression profile and is believed to play a distinct role in cells. The protein encoded by this gene is one of the PKC family members. This protein kinase has been reported to be involved in many different cellular functions, such as B cell activation, apoptosis induction, endothelial cell proliferation, and intestinal sugar absorption. Studies in mice also suggest that this kinase may also regulate neuronal functions and correlate fear-induced conflict behavior after stress. Alternatively spliced transcript variants encoding distinct isoforms have been reported.

Target:	Protein Kinase C Beta (PRKCB)
Clonality:	Polyclonal
Reactivity:	Human, Mouse, Rat
Tested Applications:	IHC, IF/ICC
Host:	Rabbit
Recommended dilutions:	IHC-P: 1/50 - 1/100, IF/ICC: 1/50 - 1/100. Not tested in IHC-F. Optimal dilutions/concentrations should be determined by the end user.
Conjugation:	Unconjugated
Immunogen:	Recombinant fusion protein corresponding to human PRKCB
Isotype:	IgG
Form:	Liquid
Purification:	Purified by affinity chromatography.
Storage:	Aliquot and store at -20°C. Avoid repeated freeze/thaw cycles.
UniProt Primary AC:	P05771 (UniProt , ExPASy)
Gene Symbol:	PRKCB
GeneID:	5579
NCBI Accession:	NP_002729.2
Buffer:	PBS, pH 7.3, containing 0.02% sodium azide, 50% glycerol.
Concentration:	1 mg/ml

Datasheet

Version: 3.0.0

Revision date: 29 Sep 2025



Note:

THIS PRODUCT IS FOR RESEARCH USE ONLY. NOT FOR USE IN DIAGNOSTIC, THERAPEUTIC OR COSMETIC PROCEDURES. NOT FOR HUMAN OR ANIMAL CONSUMPTION.

For Reference Only