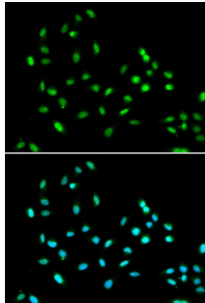


SWI/SNF-Related Matrix-Associated Actin-Dependent Regulator of Chromatin Subfamily A Containing DEAD/H Box 1 (SMARCAD1) Antibody

Catalogue No.: abx004487



Immunofluorescence analysis of A549 cells using SMARCAD1 Antibody. Secondary antibody: Cy3-conjugated Goat anti-Rabbit IgG (H+L) at 1/500 dilution. Blue: DAPI for nuclear staining.

SMARCAD1 Antibody is a Rabbit Polyclonal antibody against SMARCAD1. This gene encodes a member of the SNF subfamily of helicase proteins. The encoded protein plays a critical role in the restoration of heterochromatin organization and propagation of epigenetic patterns following DNA replication by mediating histone H3/H4 deacetylation. Mutations in this gene are associated with adermatoglyphia. Alternatively spliced transcript variants encoding multiple isoforms have been observed for this gene.

Target:	SWI/SNF-Related Matrix-Associated Actin-Dependent Regulator of Chromatin Subfamily A Containing DEAD/H Box 1 (SMARCAD1)
Clonality:	Polyclonal
Reactivity:	Human, Mouse, Rat
Tested Applications:	ELISA, WB, IF/ICC
Host:	Rabbit
Recommended dilutions:	ELISA: 1 µg/ml, WB: 1/500 - 1/2000, IF/ICC: 1/50 - 1/100. Optimal dilutions/concentrations should be determined by the end user.
Conjugation:	Unconjugated
Immunogen:	Recombinant fusion protein containing a sequence corresponding to amino acids 1-300 of human SMARCAD1.
Isotype:	IgG
Form:	Liquid
Purification:	Purified by affinity chromatography.
Storage:	Aliquot and store at -20°C. Avoid repeated freeze/thaw cycles.

Datasheet

Version: 4.0.0
Revision date: 13 Mar 2025



UniProt Primary AC: Q9H4L7 ([UniProt](#), [ExPASy](#))

Gene Symbol: SMARCAD1

GeneID: [56916](#)

NCBI Accession: NP_001121901.1

KEGG: hsa:56916

String: [9606.ENSP00000351947](#)

Molecular Weight: Calculated MW: 117 kDa

Buffer: PBS, pH 7.3, containing 0.02% sodium azide, 50% glycerol.

Concentration: 0.24 mg/ml

Note: THIS PRODUCT IS FOR RESEARCH USE ONLY. NOT FOR USE IN DIAGNOSTIC, THERAPEUTIC OR COSMETIC PROCEDURES. NOT FOR HUMAN OR ANIMAL CONSUMPTION.

For Reference Only