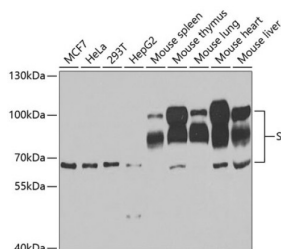


## SP100 Nuclear Antigen (SP100) Antibody

Catalogue No.: abx004488



Western blot analysis of extracts of various cell lines using SP100 Antibody (1/1000 dilution).

SP100 Antibody is a Rabbit Polyclonal antibody against SP100. This gene encodes a subnuclear organelle and major component of the PML (promyelocytic leukemia)-SP100 nuclear bodies. PML and SP100 are covalently modified by the SUMO-1 modifier, which is considered crucial to nuclear body interactions. The encoded protein binds heterochromatin proteins and is thought to play a role in tumorigenesis, immunity, and gene regulation. Alternatively spliced variants have been identified for this gene; one of which encodes a high-mobility group protein.

**Target:** SP100 Nuclear Antigen (SP100)

**Clonality:** Polyclonal

**Reactivity:** Human, Mouse

**Tested Applications:** WB

**Host:** Rabbit

**Recommended dilutions:** WB: 1/500 - 1/2000. Optimal dilutions/concentrations should be determined by the end user.

**Conjugation:** Unconjugated

**Immunogen:** Recombinant fusion protein corresponding to human SP100

**Isotype:** IgG

**Form:** Liquid

**Purification:** Purified by affinity chromatography.

**Storage:** Aliquot and store at -20°C. Avoid repeated freeze/thaw cycles.

**UniProt Primary AC:** P23497 ([UniProt](#), [ExPASy](#))

# Datasheet

Version: 4.0.0  
Revision date: 12 Sep 2025



**Gene Symbol:** SP100

**GeneID:** [6672](#)

**NCBI Accession:** NP\_001193631.1

**KEGG:** hsa:6672

**String:** [9606.ENSP00000343023](#)

**Molecular Weight:** Calculated MW: 50 kDa/53 kDa/78 kDa/100 kDa/101 kDa  
Observed MW: 66-100 kDa

**Buffer:** PBS, pH 7.3, containing 0.02% sodium azide, 50% glycerol.

**Concentration:** 1 mg/ml

**Note:** THIS PRODUCT IS FOR RESEARCH USE ONLY. NOT FOR USE IN DIAGNOSTIC, THERAPEUTIC OR COSMETIC PROCEDURES. NOT FOR HUMAN OR ANIMAL CONSUMPTION.

For Reference Only