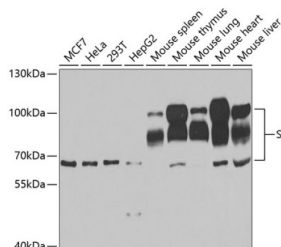


SP100 Nuclear Antigen (SP100) Antibody

Catalogue No.: abx004488



Western blot analysis of extracts of various cell lines using SP100 Antibody (1/1000 dilution).

SP100 Antibody is a Rabbit Polyclonal antibody against SP100. This gene encodes a subnuclear organelle and major component of the PML (promyelocytic leukemia)-SP100 nuclear bodies. PML and SP100 are covalently modified by the SUMO-1 modifier, which is considered crucial to nuclear body interactions. The encoded protein binds heterochromatin proteins and is thought to play a role in tumorigenesis, immunity, and gene regulation. Alternatively spliced variants have been identified for this gene; one of which encodes a high-mobility group protein.

Target: SP100 Nuclear Antigen (SP100)

Clonality: Polyclonal

Reactivity: Human, Mouse

Tested Applications: WB

Host: Rabbit

Recommended dilutions: WB: 1/500 - 1/2000. Optimal dilutions/concentrations should be determined by the end user.

Conjugation: Unconjugated

Immunogen: Recombinant fusion protein corresponding to human SP100

Isotype: IgG

Form: Liquid

Purification: Purified by affinity chromatography.

Storage: Aliquot and store at -20°C. Avoid repeated freeze/thaw cycles.

UniProt Primary AC: P23497 ([UniProt](#), [ExPASy](#))

Datasheet

Version: 4.0.0

Revision date: 06 Mar 2025



Gene Symbol: SP100

GeneID: [6672](#)

NCBI Accession: NP_001193631.1

KEGG: hsa:6672

String: [9606.ENSP00000343023](#)

Molecular Weight: Calculated MW: 50 kDa/53 kDa/78 kDa/100 kDa/101 kDa
Observed MW: 66-100 kDa

Buffer: PBS, pH 7.3, containing 0.02% sodium azide, 50% glycerol.

Concentration: 1 mg/ml

Note: THIS PRODUCT IS FOR RESEARCH USE ONLY. NOT FOR USE IN DIAGNOSTIC, THERAPEUTIC OR COSMETIC PROCEDURES. NOT FOR HUMAN OR ANIMAL CONSUMPTION.

For Reference Only