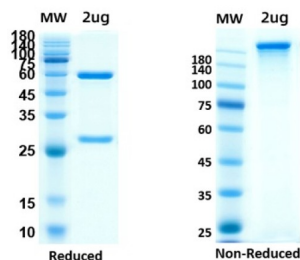
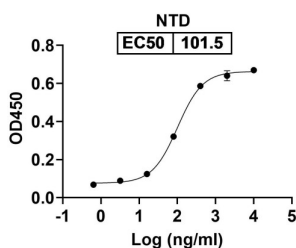


## SARS-CoV-2 Spike Protein NTD Antibody

Catalogue No.: abx376482



Reduced and non-reduced SDS-PAGE analysis of SARS-CoV-2/COVID-19 Spike NTD Antibody, with Coomassie blue staining.



Binding activity with of SARS-CoV-2/COVID-19 Spike NTD Antibody with NTD.

SARS-CoV-2/COVID-19 Spike NTD Antibody is a chimaeric recombinant antibody expressed in CHO cells against SARS-CoV-2 Spike N-Terminal Domain Protein, containing Mouse variable region and Human IgG constant region.

The SARS-CoV-2 Spike Protein (S protein) is a viral protein that allows the entry of SARS-CoV-2 into human cells. The protein forms trimers on the viral capsid and binds to human Angiotensin Converting Enzyme 2 (ACE2) located on the cell surface. The protein has a cleavage site between the S1 and S2 subunits that is targeted by the human enzyme Furin, and it may also cause the development of a syncytium (cell fusion). Antibodies to S protein can prevent viral entry as well as target the virus for further immune action.

**Target:** SARS-CoV-2 Spike Protein NTD

**Research Area:** Infection Immunity

**Clonality:** Monoclonal

**Clone:** I156

**Reactivity:** Virus

**Origin:** Human

**Expression:** Recombinant

**Tested Applications:** ELISA, WB

# Datasheet

Version: 5.0.0

Revision date: 01 Jul 2025



**Host:** Human, Mouse

**Recommended dilutions:** ELISA: 1/5000 - 1/10,000, WB: 1/1000 - 1/2000. Optimal dilutions/concentrations should be determined by the end user.

**Conjugation:** Unconjugated

**Immunogen:** Recombinant SARS-CoV-2 S-NTD protein.

**Isotype:** IgG

**Form:** Liquid

**Purification:** Purified by affinity chromatography.

**Storage:** Aliquot and store at -20°C. Avoid repeated freeze/thaw cycles.

**Buffer:** PBS, pH 7.5.

**Concentration:** 0.17 mg/ml

**Note:** THIS PRODUCT IS FOR RESEARCH USE ONLY. NOT FOR USE IN DIAGNOSTIC, THERAPEUTIC OR COSMETIC PROCEDURES. NOT FOR HUMAN OR ANIMAL CONSUMPTION.

For Reference Only