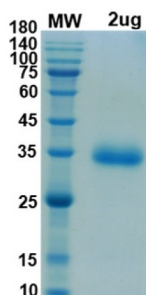


SARS-CoV-2 Spike Protein RBD (Gamma P.1 Variant)

Catalogue No.: abx620006



SDS-PAGE analysis of SARS-CoV-2 Spike Protein RBD (Gamma P.1 Variant; K417T, E484K and N501Y Mutations).

Severe Acute Respiratory Syndrome Coronavirus 2 (SARS-CoV-2/COVID-19) Spike Protein Receptor-Binding Domain (RBD) is a recombinant protein expressed in Mammalian cells.

The SARS-CoV-2 Spike Protein (S protein) is a viral protein that allows the entry of SARS-CoV-2 into human cells. The protein forms trimers on the viral capsid and binds to human Angiotensin Converting Enzyme 2 (ACE2) located on the cell surface. The protein has a cleavage site between the Spike Protein and S2 subunits that is targeted by the human enzyme Furin, and it may also cause the development of a syncytium (cell fusion). Antibodies to S protein can prevent viral entry as well as target the virus for further immune action.

The P.1 (Gamma) variant was first identified in Brazil. It contains the K417T, E484K and N501Y mutations in the spike protein's receptor-binding domain.

Target: SARS-CoV-2 Spike Protein RBD (Gamma P1 Variant)

Research Area: Infection Immunity

Target Modification: Lys417Thr, Glu484Lys, Asn501Tyr

Modification: Mutation

Origin: Virus

Expression: Recombinant

Tested Applications: SDS-PAGE

Host: Mammalian cells

Recommended dilutions: Optimal dilutions/concentrations should be determined by the end user.

Conjugation: Unconjugated

Datasheet

Version: 8.0.0

Revision date: 01 Jul 2025



| | |
|--------------------------|--|
| Form: | Lyophilized |
| Purity: | > 90% (SDS-PAGE) |
| Reconstitution: | Reconstitute in ddH ₂ O to a concentration of 1 mg/ml. |
| Storage: | Store between -20 °C and -80 °C. Avoid repeated freeze/thaw cycles. |
| NCBI Accession: | YP_009724390.1 |
| Molecular Weight: | Observed MW: 35 kDa |
| Tag: | C-terminal His tag |
| Buffer: | Prior to lyophilization: PBS, pH 7.5. |
| Note: | THIS PRODUCT IS FOR RESEARCH USE ONLY. NOT FOR USE IN DIAGNOSTIC, THERAPEUTIC OR COSMETIC PROCEDURES. NOT FOR HUMAN OR ANIMAL CONSUMPTION. |

For Reference Only