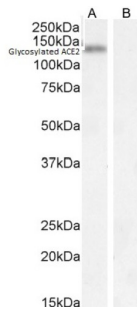
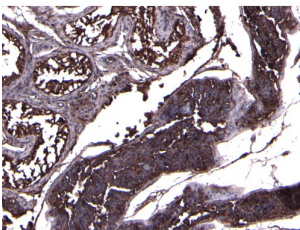


Angiotensin-Converting Enzyme 2 (ACE2) Antibody

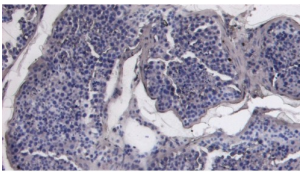
Catalogue No.: abx433704



Western blot analysis of extract of Human Kidney lysate (A) + Peptide (B) (35 µg protein in RIPA buffer) using ACE2 antibody (0.5 µg/ml).



IHC-P analysis of paraffin-embedded Human Testis tissue using ACE2 antibody (8 µg/ml).



Negative Control showing staining of paraffin-embedded Human Testis tissue, with no primary antibody.

Angiotensin-Converting Enzyme 2 (ACE2) Antibody is a Goat Polyclonal Antibody against Angiotensin-Converting Enzyme 2 (ACE2).

Target: Angiotensin-Converting Enzyme 2 (ACE2)

Clonality: Polyclonal

Reactivity: Human

Tested Applications: P-ELISA, WB, IHC, FCM

Host: Goat

Recommended dilutions: P-ELISA: 1/8000, WB: 0.03-1 µg/ml, IHC: 8 µg/ml, FCMM: 10 µg/ml. Optimal dilutions/concentrations should be determined by the end user.

Datasheet

Version: 2.0.0
Revision date: 06 Sep 2025



Immunogen:	abx617382 - C-terminus: Proprietary
Form:	Liquid
Purification:	Purified from goat serum by ammonium sulphate precipitation followed by antigen affinity chromatography using the immunizing peptide.
Storage:	Aliquot and store at -20°C. Avoid repeated freeze/thaw cycles.
Gene Symbol:	ACE2
GeneID:	59272
NCBI Accession:	NP_001358344.1
Buffer:	Tris saline, pH 7.3, containing 0.02% sodium azide and 0.5% bovine serum albumin.
Concentration:	0.5 mg/ml
Note:	THIS PRODUCT IS FOR RESEARCH USE ONLY. NOT FOR USE IN DIAGNOSTIC, THERAPEUTIC OR COSMETIC PROCEDURES. NOT FOR HUMAN OR ANIMAL CONSUMPTION.

For Reference Only