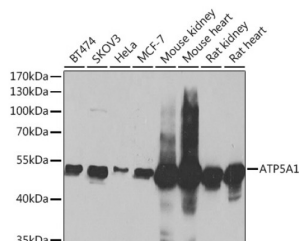
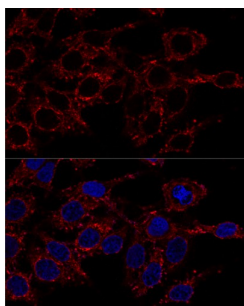


ATP Synthase Subunit Alpha, Mitochondrial (ATP5F1A) Antibody

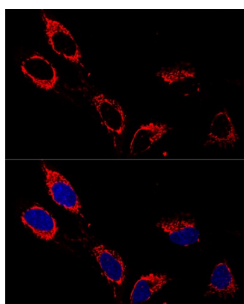
Catalogue No.: abx004513



Western blot analysis of various lysates using ATP5A1 Antibody at 1/1000 dilution. Secondary antibody: HRP-conjugated Goat anti-Rabbit IgG (H+L) at 1/10000 dilution. Lysates/proteins: 25 µg per lane. Blocking buffer: 3% nonfat dry milk in TBST. Exposure time: 1s.



Confocal immunofluorescence analysis of HeLa cells using ATP5A1 Antibody at dilution of 1/200. Blue: DAPI for nuclear staining.



Confocal immunofluorescence analysis of U-2OS cells using ATP5A1 Antibody at dilution of 1/200. Blue: DAPI for nuclear staining.

ATP5F1A Antibody is a Rabbit Polyclonal antibody against ATP5F1A. This gene encodes a subunit of mitochondrial ATP synthase. Mitochondrial ATP synthase catalyzes ATP synthesis, using an electrochemical gradient of protons across the inner membrane during oxidative phosphorylation. ATP synthase is composed of two linked multi-subunit complexes: the soluble catalytic core, F1, and the membrane-spanning component, Fo, comprising the proton channel. The catalytic portion of mitochondrial ATP synthase consists of 5 different subunits (alpha, beta, gamma, delta, and epsilon) assembled with a stoichiometry of 3 alpha, 3 beta, and a single representative of the other 3. The proton channel consists of three main subunits (a, b, c). This gene encodes the alpha subunit of the catalytic core. Alternatively spliced transcript variants encoding the different isoforms have been identified. Pseudogenes of this gene are located on chromosomes 9, 2, and 16.

Target: ATP Synthase Subunit Alpha, Mitochondrial (ATP5F1A)

Clonality: Polyclonal

Reactivity: Human, Mouse, Rat

Tested Applications: ELISA, WB, IF/ICC

Datasheet

Version: 6.0.0
Revision date: 24 Aug 2025



Host:	Rabbit
Recommended dilutions:	ELISA: 1 µg/ml, WB: 1/500 - 1/1000, IF/ICC: 1/50 - 1/200. Optimal dilutions/concentrations should be determined by the end user.
Conjugation:	Unconjugated
Immunogen:	Synthetic peptide corresponding to ATP5F1A. The exact sequence is proprietary.
Isotype:	IgG
Form:	Liquid
Purification:	Purified by affinity chromatography.
Storage:	Aliquot and store at -20°C. Avoid repeated freeze/thaw cycles.
UniProt Primary AC:	P25705 (UniProt , ExPASy)
Gene Symbol:	ATP5F1A
GeneID:	498
NCBI Accession:	NP_004037.1
KEGG:	hsa:498
String:	9606.ENSP00000381736
Molecular Weight:	Calculated MW: 60 kDa Observed MW: 53 kDa
Buffer:	PBS, pH 7.3, containing 0.09% sodium azide, 50% glycerol.
Concentration:	> 0.2 mg/ml
Note:	THIS PRODUCT IS FOR RESEARCH USE ONLY. NOT FOR USE IN DIAGNOSTIC, THERAPEUTIC OR COSMETIC PROCEDURES. NOT FOR HUMAN OR ANIMAL CONSUMPTION.