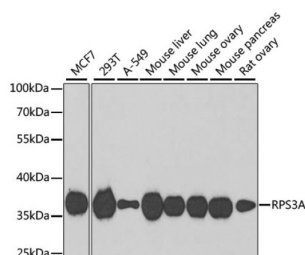
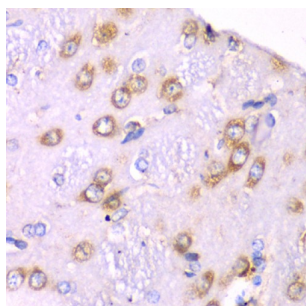


Ribosomal Protein S3A (RPS3A) Antibody

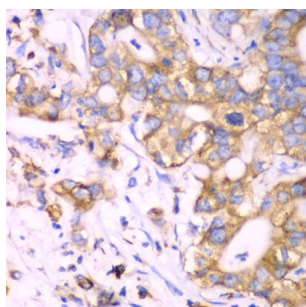
Catalogue No.: abx004514



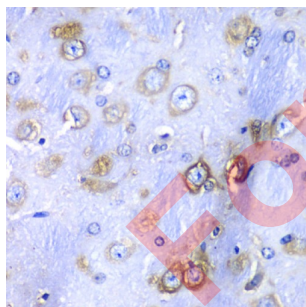
Western blot analysis of extracts of various cell lines using RPS3A Antibody (1/1000 dilution).



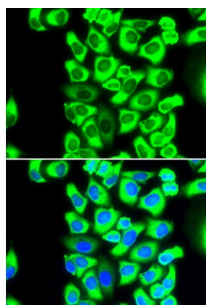
Immunohistochemistry of paraffin-embedded Rat brain using RPS3A Antibody (1/100 dilution, 40x lens).



Immunohistochemistry of paraffin-embedded Human liver cancer using RPS3A Antibody (1/100 dilution, 40x lens).



Immunohistochemistry of paraffin-embedded Mouse brain using RPS3A Antibody (1/100 dilution, 40x lens).



Immunofluorescence analysis of MCF-7 cells using RPS3A Antibody

Datasheet

Version: 3.0.0
Revision date: 15 Aug 2025



RPS3A Antibody is a Rabbit Polyclonal antibody against RPS3A. Ribosomes, the organelles that catalyze protein synthesis, consist of a small 40S subunit and a large 60S subunit. Together these subunits are composed of 4 RNA species and approximately 80 structurally distinct proteins. This gene encodes a ribosomal protein that is a component of the 40S subunit. The protein belongs to the S3AE family of ribosomal proteins. It is located in the cytoplasm. Disruption of the gene encoding rat ribosomal protein S3a, also named v-fos transformation effector protein, in v-fos-transformed rat cells results in reversion of the transformed phenotype. This gene is co-transcribed with the U73A and U73B small nucleolar RNA genes, which are located in its fourth and third introns, respectively. As is typical for genes encoding ribosomal proteins, there are multiple processed pseudogenes of this gene dispersed through the genome. Alternatively spliced transcript variants have been found for this gene.

Target:	Ribosomal Protein S3A (RPS3A)
Clonality:	Polyclonal
Reactivity:	Human, Mouse, Rat
Tested Applications:	WB, IHC, IF/ICC
Host:	Rabbit
Recommended dilutions:	WB: 1/500 - 1/2000, IHC-P: 1/50 - 1/200, IF/ICC: 1/50 - 1/200. Not tested in IHC-F. Optimal dilutions/concentrations should be determined by the end user.
Conjugation:	Unconjugated
Immunogen:	Recombinant fusion protein corresponding to human RPS3A
Isotype:	IgG
Form:	Liquid
Purification:	Purified by affinity chromatography.
Storage:	Aliquot and store at -20°C. Avoid repeated freeze/thaw cycles.
UniProt Primary AC:	P61247 (UniProt , ExPASy)
Gene Symbol:	RPS3A
GeneID:	6189
NCBI Accession:	NP_000997.1
KEGG:	hsa:6189
String:	9606.ENSP00000346050

Datasheet

Version: 3.0.0

Revision date: 15 Aug 2025



Molecular Weight: Calculated MW: 29 kDa
Observed MW: 35 kDa

Buffer: PBS, pH 7.3, containing 0.02% sodium azide, 50% glycerol.

Concentration: 1 mg/ml

Note: THIS PRODUCT IS FOR RESEARCH USE ONLY. NOT FOR USE IN DIAGNOSTIC, THERAPEUTIC OR COSMETIC PROCEDURES. NOT FOR HUMAN OR ANIMAL CONSUMPTION.

For Reference Only