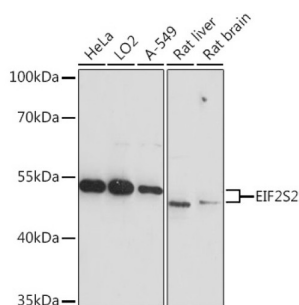


Eukaryotic Translation Initiation Factor 2 Subunit 2 (EIF2S2) Antibody

Catalogue No.: abx004521



Western blot analysis of extracts of various cell lines using EIF2S2 Antibody (1/3000 dilution).

EIF2S2 Antibody is a Rabbit Polyclonal antibody against EIF2S2. Eukaryotic translation initiation factor 2 (EIF-2) functions in the early steps of protein synthesis by forming a ternary complex with GTP and initiator tRNA and binding to a 40S ribosomal subunit. EIF-2 is composed of three subunits, alpha, beta, and gamma, with the protein encoded by this gene representing the beta subunit. The beta subunit catalyzes the exchange of GDP for GTP, which recycles the EIF-2 complex for another round of initiation.

Target: Eukaryotic Translation Initiation Factor 2 Subunit 2 (EIF2S2)

Clonality: Polyclonal

Reactivity: Human, Mouse, Rat

Tested Applications: WB

Host: Rabbit

Recommended dilutions: WB: 1/500 - 1/2000. Optimal dilutions/concentrations should be determined by the end user.

Conjugation: Unconjugated

Immunogen: Recombinant fusion protein corresponding to human EIF2S2

Isotype: IgG

Form: Liquid

Purification: Purified by affinity chromatography.

Storage: Aliquot and store at -20°C. Avoid repeated freeze/thaw cycles.

UniProt Primary AC: P20042 ([UniProt](#), [ExPASy](#))

Datasheet

Version: 5.0.0

Revision date: 28 Sep 2025



Gene Symbol: EIF2S2

GeneID: [8894](#)

NCBI Accession: NP_003899.2

KEGG: hsa:8894

String: [9606.ENSP00000364119](#)

Molecular Weight: Calculated MW: 38 kDa
Observed MW: 38 kDa

Buffer: PBS, pH 7.3, containing 0.01% thiomersal, 50% glycerol.

Concentration: 1 mg/ml

Note: THIS PRODUCT IS FOR RESEARCH USE ONLY. NOT FOR USE IN DIAGNOSTIC, THERAPEUTIC OR COSMETIC PROCEDURES. NOT FOR HUMAN OR ANIMAL CONSUMPTION.

For Reference Only