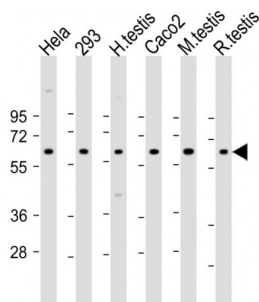
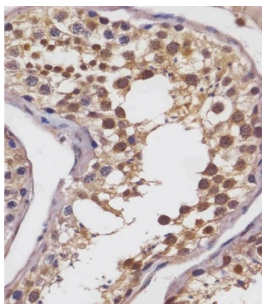


Glucose Transporter 8 / GLUT8 (SLC2A8) Antibody

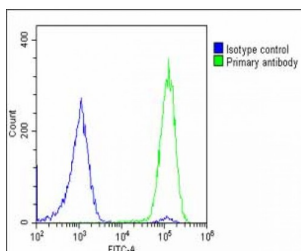
Catalogue No.: abx246741



WB analysis of (1) HeLa whole cell lysate, (2) 293 whole cell lysate, (3) human testis lysate, (4) Caco2 whole cell lysate, (5) mouse testis lysate, and (6) rat testis lysate, using SLC2A8 Antibody (1/2000 dilution). Predicted band size : 51 kDa. Blocking/Dilution buffer: 5% NFDM/TBST.



IHC-P analysis of human testis tissue, using SLC2A8 Antibody (1/25 dilution, 1 h at 37 °C). The tissue was fixed with formaldehyde and blocked with 3% BSA for 30 min at room temperature. Heat-mediated antigen retrieval was carried out in citrate buffer, pH 6.



Flow cytometry analysis of U-2 OS cells, using SLC2A8 Antibody (green). The cells were fixed with 2% paraformaldehyde (10 min) and then permeabilized with 90% methanol for 10 min. The cells were then incubated in 2% BSA to block non-specific protein-protein interactions, followed by the primary antibody (1/25 dilution, 1 h at 37 °C). The secondary antibody used was DL488-conjugated Goat-Anti-Rabbit IgG (1/200 dilution, 40 min at 37 °C). The isotype control antibody (blue) was rabbit IgG (1 µg/10⁶ cells) used under the same conditions. Acquisition of > 10,000 events was performed.

Glucose Transporter 8 / GLUT8 (SLC2A8) Antibody is a Rabbit Polyclonal antibody against Glucose Transporter 8 / GLUT8 (SLC2A8).

Target: Glucose Transporter 8 / GLUT8 (SLC2A8)

Clonality: Polyclonal

Reactivity: Human, Mouse, Rat

Tested Applications: ELISA, WB, IHC, FCM

Host: Rabbit

Recommended dilutions: WB: 1/2000, IHC-P: 1/25, FCM: 1/25. Not tested in IHC-F. Optimal dilutions/concentrations should be determined by the end user.

Datasheet

Version: 3.0.0
Revision date: 14 Jun 2025



Conjugation:	Unconjugated
Immunogen:	KLH-conjugated synthetic peptide between 260-292 amino acids from the central region of human SLC2A8.
Isotype:	IgG
Form:	Liquid
Purification:	Purified through a protein A column, followed by peptide affinity purification.
Storage:	Aliquot and store at -20°C. Avoid repeated freeze/thaw cycles.
UniProt Primary AC:	Q9NY64 (UniProt , ExPASy)
Gene Symbol:	SLC2A8
GeneID:	29988
KEGG:	hsa:29988
String:	9606.ENSP00000362469
Molecular Weight:	Calculated MW: 50.8 kDa
Buffer:	PBS containing 0.09% sodium azide.
Specificity:	Predicted to react with Cow SLC2A8.
Concentration:	0.5 mg/ml
Note:	THIS PRODUCT IS FOR RESEARCH USE ONLY. NOT FOR USE IN DIAGNOSTIC, THERAPEUTIC OR COSMETIC PROCEDURES. NOT FOR HUMAN OR ANIMAL CONSUMPTION.