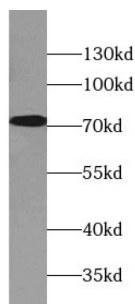


Butyrophilin Subfamily 1, Member A1 (BTN1A1) Antibody

Catalogue No.: abx239872



WB analysis of Caco-2 cells, using BTN1A1 antibody (1/2000 dilution).

Butyrophilin Subfamily 1, Member A1 (BTN1A1) Antibody is a Rabbit Polyclonal antibody for the detection of BTN1A1.

BTN1A1, also named as Butyrophilin subfamily 1 member A1, is a 526 amino acid protein, which contains 1 B30.2/SPRY domain and belongs to the immunoglobulin superfamily. BTN/MOG family. BTN1A1 localizes in the integral component of plasma membrane. BTN1A1 may function in the secretion of milk-fat droplets and may act as a specific membrane-associated receptor for the association of cytoplasmic droplets with the apical plasma membrane. BTN1A1 Inhibits the proliferation of CD4 and CD8 T-cells activated by anti-CD3 antibodies, T-cell metabolism and IL2 and IFNG secretion. The calculated molecular weight of BTN1A1 is a 59 kDa, but the modified BTN1A1 protein is about 65-75 kDa.

Target: Butyrophilin Subfamily 1, Member A1 (BTN1A1)

Clonality: Polyclonal

Reactivity: Human

Tested Applications: ELISA, WB

Host: Rabbit

Recommended dilutions: WB: 1/500 - 1/5000. Optimal dilutions/concentrations should be determined by the end user.

Conjugation: Unconjugated

Immunogen: butyrophilin, subfamily 1, member A1

Isotype: IgG

Form: Liquid

Purity: ≥ 95% (SDS-PAGE)

Purification: Purified by immunogen affinity chromatography.

Datasheet

Version: 2.0.0

Revision date: 09 Apr 2025



Storage:	Aliquot and store at -20°C. Avoid repeated freeze/thaw cycles.
Validity:	12 months.
UniProt Primary AC:	Q13410 (UniProt , ExPASy)
Gene Symbol:	BTN1A1
GeneID:	696
KEGG:	hsa:696
String:	9606.ENSP00000244513
Molecular Weight:	Observed MW: 73 kDa
Buffer:	PBS, pH 7.3, with 0.02% sodium azide and 50% glycerol.
Concentration:	2 mg/ml
Note:	THIS PRODUCT IS FOR RESEARCH USE ONLY. NOT FOR USE IN DIAGNOSTIC, THERAPEUTIC OR COSMETIC PROCEDURES. NOT FOR HUMAN OR ANIMAL CONSUMPTION.

For Reference Only