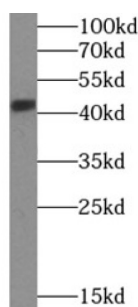


SH3-Domain GRB2-Like 1 (SH3GL1) Antibody

Catalogue No.: abx239901



WB analysis of COS-7 cells, using SH3GL1 antibody (1/1000 dilution).

SH3-Domain GRB2-Like 1 (SH3GL1) Antibody is a Rabbit Polyclonal antibody for the detection of SH3GL1.

This gene encodes a member of the endophilin family of Src homology 3 domain-containing proteins. The encoded protein is involved in endocytosis and may also play a role in the cell cycle. Overexpression of this gene may play a role in leukemogenesis, and the encoded protein has been implicated in acute myeloid leukemia as a fusion partner of the myeloid-lymphoid leukemia protein. Pseudogenes of this gene are located on the long arm of chromosomes 11 and 17. Alternatively spliced transcript variants encoding multiple isoforms have been observed for this gene.

Target: SH3-Domain GRB2-Like 1 (SH3GL1)

Clonality: Polyclonal

Reactivity: Human, Mouse, Rat

Tested Applications: ELISA, WB

Host: Rabbit

Recommended dilutions: WB: 1/500 - 1/2000. Optimal dilutions/concentrations should be determined by the end user.

Conjugation: Unconjugated

Immunogen: SH3GL1

Isotype: IgG

Form: Liquid

Purity: ≥ 95% (SDS-PAGE)

Purification: Purified by immunogen affinity chromatography.

Datasheet

Version: 1.0.0
Revision date: 05 Sep 2025



Storage: Aliquot and store at -20°C. Avoid repeated freeze/thaw cycles.

Validity: 12 months.

UniProt Primary AC: Q99961 ([UniProt](#), [ExPASy](#))

Gene Symbol: SH3GL1

GeneID: [6455](#)

OMIM: [601768](#)

HGNC: 10830

KEGG: hsa:6455

Ensembl: ENSG00000141985

String: [9606.ENSP00000269886](#)

Molecular Weight: Observed MW: 41 kDa

Buffer: PBS, pH 7.3, with 0.02% sodium azide and 50% glycerol.

Concentration: 2 mg/ml

Note: THIS PRODUCT IS FOR RESEARCH USE ONLY. NOT FOR USE IN DIAGNOSTIC, THERAPEUTIC OR COSMETIC PROCEDURES. NOT FOR HUMAN OR ANIMAL CONSUMPTION.