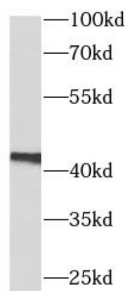
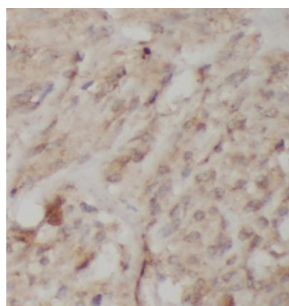


Vascular Endothelial Growth Factor A (VEGFA) Antibody

Catalogue No.: abx239935



WB analysis of MCF-7 cells, using VEGF antibody (1/2000 dilution).



IHC-P analysis of human stomach cancer tissue, using VEGF antibody (1/200 dilution).

Vascular Endothelial Growth Factor A (VEGFA) Antibody is a Mouse Monoclonal antibody for the detection of VEGF.

VEGFA, also named as VEGF or VPF, belongs to the PDGF/VEGF growth factor family. It is a growth factor active in angiogenesis, vasculogenesis and endothelial cell growth. VEGFA induces endothelial cell proliferation, promotes cell migration, inhibits apoptosis and induces permeabilization of blood vessels. It binds to the FLT1/VEGFR1 and KDR/VEGFR2 receptors, heparan sulfate and heparin. Defects in VEGFA are a cause of susceptibility to microvascular complications of diabetes type 1 (MVCD1). VEGFA has 13 isoforms with MW 16kd to 45kd. Some isoforms has homodimer form, such as VEGFA189 (38kd), VEGFA110 (34kd). VEGFA is a 34kd to 42kd, dimeric, disulfide-bound glycoprotein. VEGF-A exists in at least seven homodimeric isoforms. The monomers consist of 121, 145, 148, 165, 183, 189, or 206 amino acids (PMID:15602010). This antibody can recognize all the isoforms of VEGFA.

Target: Vascular Endothelial Growth Factor A (VEGFA)

Clonality: Monoclonal

Reactivity: Human

Tested Applications: ELISA, WB, IHC

Host: Mouse

Recommended dilutions: WB: 1/1000 - 1/4000, IHC: 1/50 - 1/500. Optimal dilutions/concentrations should be determined by the end user.

Conjugation: Unconjugated

Datasheet

Version: 2.0.0
Revision date: 05 Jun 2025



Immunogen:	vascular endothelial growth factor A
Isotype:	IgG _{2b}
Form:	Liquid
Purity:	≥ 95% (SDS-PAGE)
Purification:	Purified by Protein A and Protein G affinity chromatography.
Storage:	Aliquot and store at -20°C. Avoid repeated freeze/thaw cycles.
Validity:	12 months.
UniProt Primary AC:	P15692 (UniProt , ExPASy)
GeneID:	7422
OMIM:	192240
Molecular Weight:	Observed MW: 45 kDa
Buffer:	0.01 M PBS, pH 7.4.
Concentration:	2 mg/ml
Note:	THIS PRODUCT IS FOR RESEARCH USE ONLY. NOT FOR USE IN DIAGNOSTIC, THERAPEUTIC OR COSMETIC PROCEDURES. NOT FOR HUMAN OR ANIMAL CONSUMPTION.