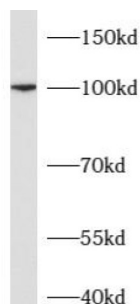
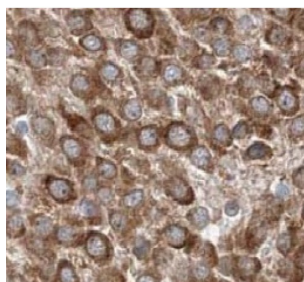


Microtubule-Associated Protein Tau (MAPT) Antibody

Catalogue No.: abx240006



WB analysis of U-251 cells, using TAU antibody (1/5000 dilution).



IHC-P analysis of mouse brain tissue, using TAU antibody (1/200 dilution).

Microtubule-Associated Protein Tau (MAPT) Antibody is a Mouse Monoclonal antibody for the detection of TAU.

This gene encodes the microtubule-associated protein tau (MAPT) whose transcript undergoes complex, regulated alternative splicing, giving rise to several mRNA species. MAPT transcripts are differentially expressed in the nervous system, depending on stage of neuronal maturation and neuron type. MAPT gene mutations have been associated with several neurodegenerative disorders such as Alzheimer's disease, Pick's disease, frontotemporal dementia, cortico-basal degeneration and progressive supranuclear palsy.

Target: Microtubule-Associated Protein Tau (MAPT)

Clonality: Monoclonal

Reactivity: Human, Mouse, Rat

Tested Applications: ELISA, WB, IHC

Host: Mouse

Recommended dilutions: WB: 1/1000 - 1/10000, IHC: 1/100 - 1/400. Optimal dilutions/concentrations should be determined by the end user.

Conjugation: Unconjugated

Immunogen: microtubule-associated protein tau

Datasheet

Version: 3.0.0
Revision date: 24 May 2025



Isotype:	IgG ₂ c
Form:	Liquid
Purity:	≥ 95% (SDS-PAGE)
Purification:	Purified by Protein A and Protein G affinity chromatography.
Storage:	Aliquot and store at -20°C. Avoid repeated freeze/thaw cycles.
Validity:	12 months.
UniProt Primary AC:	P10636 (UniProt , ExPASy)
Gene Symbol:	MAPT
GeneID:	4137
OMIM:	157140
HGNC:	6893
KEGG:	hsa:4137
Ensembl:	ENSG00000186868
String:	9606.ENSP00000340820
Molecular Weight:	Observed MW: 100 kDa
Buffer:	PBS, pH 7.3, with 0.02% sodium azide and 50% glycerol.
Concentration:	2 mg/ml
Note:	THIS PRODUCT IS FOR RESEARCH USE ONLY. NOT FOR USE IN DIAGNOSTIC, THERAPEUTIC OR COSMETIC PROCEDURES. NOT FOR HUMAN OR ANIMAL CONSUMPTION.