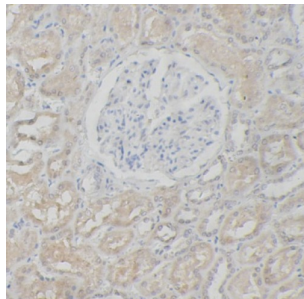


## SWI/SNF-Related Matrix-Associated Actin-Dependent Regulator of Chromatin Subfamily B Member 1 (SMARCB1) Antibody

Catalogue No.: abx240038



IHC-P analysis of human kidney tissue, using SNF5 antibody (1/200 dilution).

SWI/SNF-Related Matrix-Associated Actin-Dependent Regulator of Chromatin Subfamily B Member 1 (SMARCB1) Antibody is a Rabbit Polyclonal antibody for the detection of SNF5.

<b>Target:</b>	SWI/SNF-Related Matrix-Associated Actin-Dependent Regulator of Chromatin Subfamily B Member 1 (SMARCB1)
<b>Clonality:</b>	Polyclonal
<b>Reactivity:</b>	Human
<b>Tested Applications:</b>	ELISA, IHC
<b>Host:</b>	Rabbit
<b>Recommended dilutions:</b>	IHC: 1/50 - 1/500. Optimal dilutions/concentrations should be determined by the end user.
<b>Conjugation:</b>	Unconjugated
<b>Immunogen:</b>	SWI/SNF-related matrix-associated actin-dependent regulator of chromatin subfamily B member 1
<b>Isotype:</b>	IgG
<b>Form:</b>	Liquid
<b>Purity:</b>	≥ 95% (SDS-PAGE)
<b>Purification:</b>	Purified by immunogen affinity chromatography.
<b>Storage:</b>	Aliquot and store at -20°C. Avoid repeated freeze/thaw cycles.
<b>Validity:</b>	12 months.

# Datasheet

Version: 1.0.0  
Revision date: 10 Jun 2025



**UniProt Primary AC:** Q12824 ([UniProt](#), [ExPASy](#))

**Gene Symbol:** SMARCB1

**GeneID:** [6598](#)

**KEGG:** hsa:6598

**String:** [9606.ENSP00000263121](#)

**Molecular Weight:** Observed MW: 44 kDa

**Buffer:** PBS, pH 7.3, with 0.02% sodium azide and 50% glycerol.

**Concentration:** 2 mg/ml

**Note:** THIS PRODUCT IS FOR RESEARCH USE ONLY. NOT FOR USE IN DIAGNOSTIC, THERAPEUTIC OR COSMETIC PROCEDURES. NOT FOR HUMAN OR ANIMAL CONSUMPTION.

For Reference Only