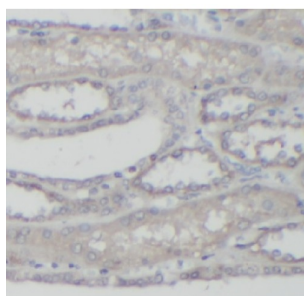


ATP Binding Cassette Transporter C6 (ABCC6) Antibody

Catalogue No.: abx240091



IHC-P analysis of human kidney tissue, using ABCC6 antibody (1/100 dilution).

ATP Binding Cassette Transporter C6 (ABCC6) Antibody is a Rabbit Polyclonal antibody for the detection of ABCC6.

The ATP-binding cassette transporter 6 (ABCC6) gene, also named as MRP6, is a cellular transmembrane protein transporter and belongs to ATP-binding cassette (ABC) family. ABCC6 is an ATP-dependent transporter contains two ATP-binding domains. It is mainly found in the liver, the proximal tubules of the kidneys and the intestines. ABCC6 is involved in a pathway of extracellular nucleotide metabolism and the regulation of tissue calcification. Mutations of ABCC6 leads to pseudoxanthoma elasticum (PXE) which is a rare autosomal recessive disorder. Mutations of ABCC6 can also lead generalized arterial calcification of infancy-2 (GACI2).

Target: ATP Binding Cassette Transporter C6 (ABCC6)

Clonality: Polyclonal

Reactivity: Human

Tested Applications: ELISA, IHC

Host: Rabbit

Recommended dilutions: IHC: 1/20 - 1/200. Optimal dilutions/concentrations should be determined by the end user.

Conjugation: Unconjugated

Immunogen: ATP-binding cassette, sub-family C (CFTR/MRP), member 6

Isotype: IgG

Form: Liquid

Purity: ≥ 95% (SDS-PAGE)

Purification: Purified by immunogen affinity chromatography.

Datasheet

Version: 2.0.0

Revision date: 09 Apr 2025



Storage:	Aliquot and store at -20°C. Avoid repeated freeze/thaw cycles.
Validity:	12 months.
UniProt Primary AC:	O95255 (UniProt , ExPASy)
Gene Symbol:	ABCC6
GeneID:	368
KEGG:	hsa:368
String:	9606.ENSP0000020557
Molecular Weight:	Observed MW: 165 kDa
Buffer:	PBS, pH 7.3, with 0.02% sodium azide and 50% glycerol.
Concentration:	2 mg/ml
Note:	THIS PRODUCT IS FOR RESEARCH USE ONLY. NOT FOR USE IN DIAGNOSTIC, THERAPEUTIC OR COSMETIC PROCEDURES. NOT FOR HUMAN OR ANIMAL CONSUMPTION.

For Reference Only