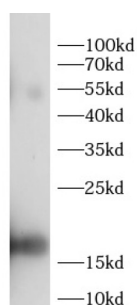


Leptin (LEP) Antibody

Catalogue No.: abx240137



WB analysis of 293T cells, using LEP antibody (1/500 dilution).

Leptin (LEP) Antibody is a Rabbit Polyclonal antibody for the detection of leptin.

Leptin is a protein that is secreted by white adipocytes, and which plays a major role in the regulation of body weight. Leptin is the most critical hormone in the homeostatic regulation of energy balance among those so far discovered. Leptin primarily acts on the neurons of the mediobasal part of hypothalamus to regulate food intake, thermogenesis, and the blood glucose level. Leptin also has several endocrine functions, and is involved in the regulation of immune and inflammatory responses, hematopoiesis, angiogenesis and wound healing. Mutations in this gene and/or its regulatory regions cause severe obesity, and morbid obesity with hypogonadism. Leptin has also been linked to type 2 diabetes mellitus development.

Target: Leptin (LEP)

Clonality: Polyclonal

Reactivity: Human

Tested Applications: ELISA, WB

Host: Rabbit

Recommended dilutions: WB: 1/200 - 1/2000. Optimal dilutions/concentrations should be determined by the end user.

Conjugation: Unconjugated

Immunogen: leptin

Isotype: IgG

Form: Liquid

Purity: ≥ 95% (SDS-PAGE)

Purification: Purified by immunogen affinity chromatography.

Datasheet

Version: 1.0.0
Revision date: 05 Sep 2025



Storage: Aliquot and store at -20°C. Avoid repeated freeze/thaw cycles.

Validity: 12 months.

UniProt Primary AC: P41159 ([UniProt](#), [ExPASy](#))

Gene Symbol: LEP

GeneID: [3952](#)

OMIM: [164160](#)

HGNC: 6553

KEGG: hsa:3952

Ensembl: ENSG00000174697

String: [9606.ENSP00000312652](#)

Molecular Weight: Observed MW: 18 kDa

Buffer: PBS, pH 7.3, with 0.02% sodium azide and 50% glycerol.

Concentration: 2 mg/ml

Note: THIS PRODUCT IS FOR RESEARCH USE ONLY. NOT FOR USE IN DIAGNOSTIC, THERAPEUTIC OR COSMETIC PROCEDURES. NOT FOR HUMAN OR ANIMAL CONSUMPTION.