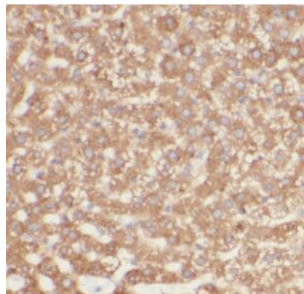


Piezo-Type Mechanosensitive Ion Channel Component 2 (PIEZO2) Antibody

Catalogue No.: abx240142



IHC-P analysis of human liver tissue, using Piezo2 antibody (1/200 dilution).

Piezo-Type Mechanosensitive Ion Channel Component 2 (PIEZO2) Antibody is a Rabbit Polyclonal antibody for the detection of Piezo2.

The protein encoded by this gene contains more than thirty transmembrane domains and likely functions as part of mechanically-activated (MA) cation channels. These channels serve to connect mechanical forces to biological signals. The encoded protein quickly adapts MA currents in somatosensory neurons. Defects in this gene are a cause of type 5 distal arthrogryposis. Several alternatively spliced transcript variants of this gene have been described, but their full-length nature is not known.

Target:	Piezo-Type Mechanosensitive Ion Channel Component 2 (PIEZO2)
Clonality:	Polyclonal
Reactivity:	Human
Tested Applications:	ELISA, IHC
Host:	Rabbit
Recommended dilutions:	IHC: 1/50 - 1/200. Optimal dilutions/concentrations should be determined by the end user.
Conjugation:	Unconjugated
Immunogen:	Piezo-type mechanosensitive ion channel component 2
Isotype:	IgG
Form:	Liquid
Purity:	≥ 95% (SDS-PAGE)

Datasheet

Version: 2.0.0

Revision date: 11 Jun 2025



Purification:	Purified by immunogen affinity chromatography.
Storage:	Aliquot and store at -20°C. Avoid repeated freeze/thaw cycles.
Validity:	12 months.
UniProt Primary AC:	Q9H5I5 (UniProt , ExPASy)
Gene Symbol:	PIEZO2
GeneID:	63895
KEGG:	hsa:63895
String:	9606.ENSP00000421377
Buffer:	PBS, pH 7.3, with 0.02% sodium azide and 50% glycerol.
Concentration:	2 mg/ml
Note:	THIS PRODUCT IS FOR RESEARCH USE ONLY. NOT FOR USE IN DIAGNOSTIC, THERAPEUTIC OR COSMETIC PROCEDURES. NOT FOR HUMAN OR ANIMAL CONSUMPTION.

For Reference Only