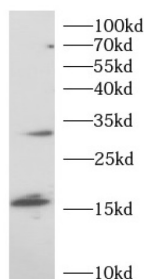
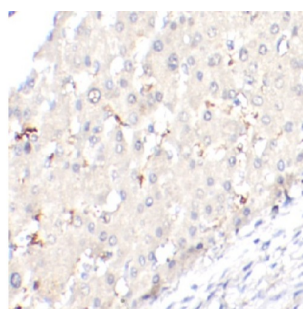


Triggering Receptor Expressed On Myeloid Cells 1 (TREM1) Antibody

Catalogue No.: abx240192



WB analysis of Mouse liver, using TREM1 antibody (1/1000 dilution).



IHC-P analysis of human liver tissue, using TREM1 antibody (1/100 dilution).

Triggering Receptor Expressed On Myeloid Cells 1 (TREM1) Antibody is a Rabbit Polyclonal antibody for the detection of TREM1.

Stimulates neutrophil and monocyte-mediated inflammatory responses. Triggers release of pro-inflammatory chemokines and cytokines, as well as increased surface expression of cell activation markers. Amplifier of inflammatory responses that are triggered by bacterial and fungal infections and is a crucial mediator of septic shock.

Target: Triggering Receptor Expressed On Myeloid Cells 1 (TREM1)

Clonality: Polyclonal

Reactivity: Human, Mouse

Tested Applications: ELISA, WB, IHC

Host: Rabbit

Recommended dilutions: WB: 1/500 - 1/2000, IHC: 1/20 - 1/200. Optimal dilutions/concentrations should be determined by the end user.

Conjugation: Unconjugated

Immunogen: triggering receptor expressed on myeloid cells 1

Isotype: IgG

Datasheet

Version: 2.0.0
Revision date: 10 Jun 2025



Form:	Liquid
Purity:	≥ 95% (SDS-PAGE)
Purification:	Purified by immunogen affinity chromatography.
Storage:	Aliquot and store at -20°C. Avoid repeated freeze/thaw cycles.
Validity:	12 months.
UniProt Primary AC:	Q9NP99 (UniProt , ExPASy)
Gene Symbol:	TREM1
GeneID:	54210
OMIM:	605085
HGNC:	17760
Ensembl:	ENSG00000124731
String:	9606.ENSP00000244709
Molecular Weight:	Observed MW: 25-30 kDa
Buffer:	PBS, pH 7.3, with 0.02% sodium azide and 50% glycerol.
Concentration:	2 mg/ml
Note:	THIS PRODUCT IS FOR RESEARCH USE ONLY. NOT FOR USE IN DIAGNOSTIC, THERAPEUTIC OR COSMETIC PROCEDURES. NOT FOR HUMAN OR ANIMAL CONSUMPTION.